

Data about University of Florida Students

Dr. Jeanna Mastrodicasa
Assistant Vice President for Student Affairs
Division of Student Affairs
jmastro@ufl.edu



A Sample of Usage Tracking by Student Affairs Departments

- 108,115 student volunteer hours (valued at \$2.3M)
- 34,963 unique students who participated in Recreational Sports
- 37,076 student attendees to Gator Nights
- 3663 students used the Counseling and Wellness Center
- 2414 students in distress/crisis
- More than 1600 student employees within the Division of Student Affairs
- 1168 students registered with the Disability Resource Center
- 1175 students in Conduct cases
- 985 registered student organizations

Graduation Exit Survey: All UF students



- Began Spring 2012; mandatory Summer 2012
- Collects plans post-graduation, including location, salary, and job or graduate school status
- Spring 2012: **60%** of all UF students, both undergraduate and graduate, at graduation in Spring 2012 intended to work full or part-time jobs. **29%** indicated they would continue onto graduate school.

What is SERU?



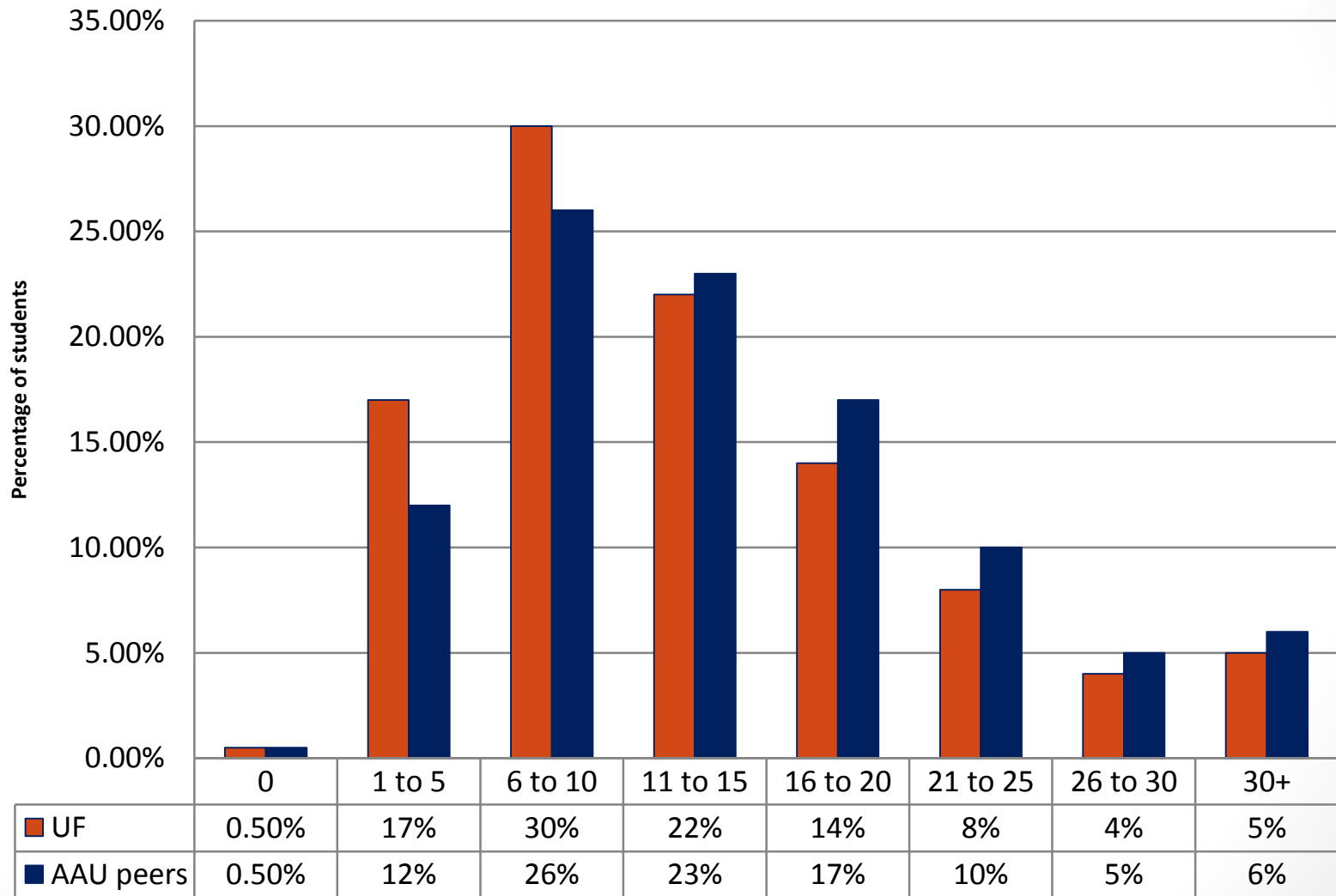
Student survey began in the University of California system: Student Experience in Research Universities

Developed by UC Berkley Center for Studies in Higher Education

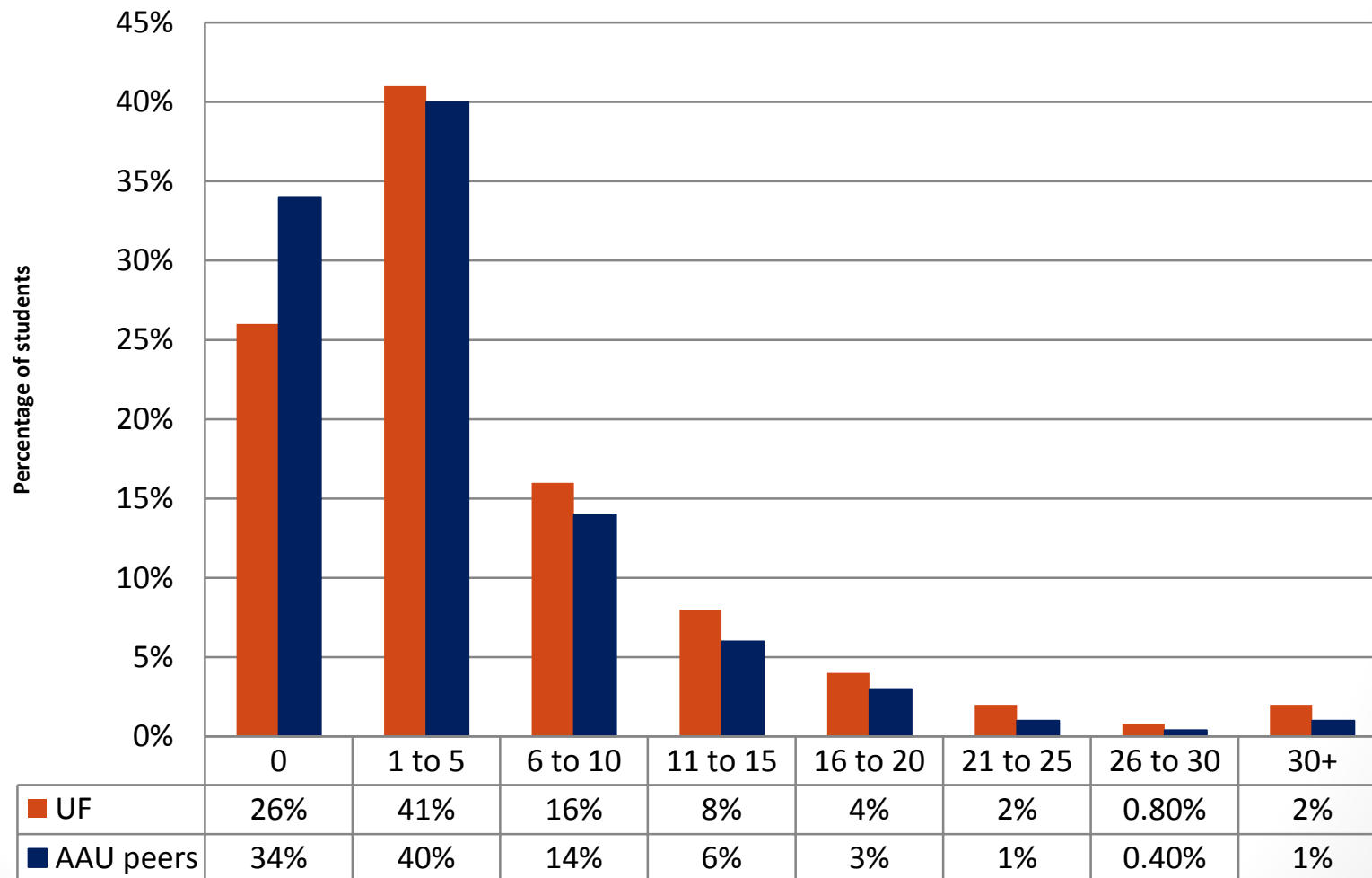
Tailored to research universities and opened to AAU members outside California in 2009

Surveyed all undergraduate students – not a sample!

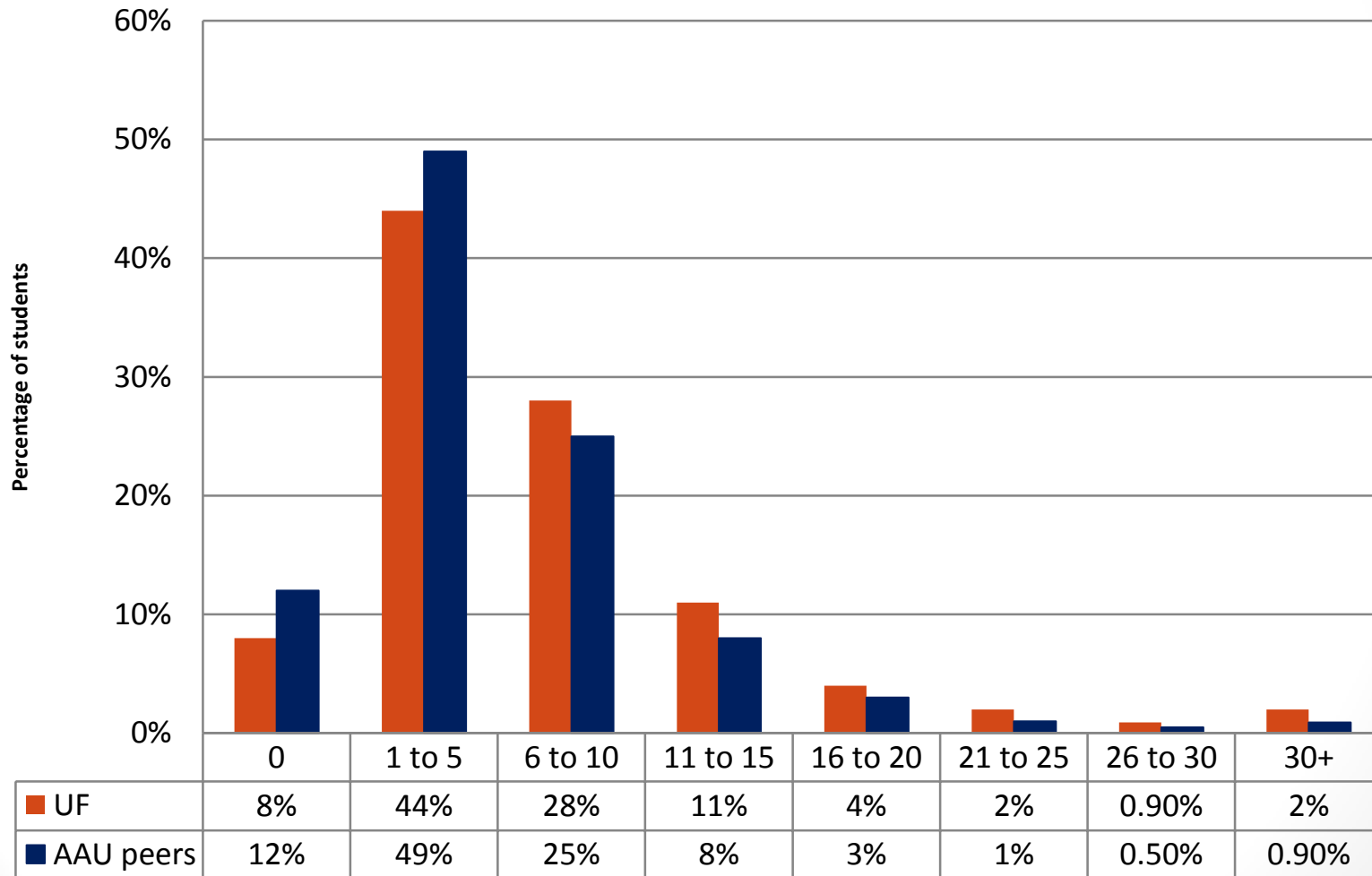
Hours studying per week



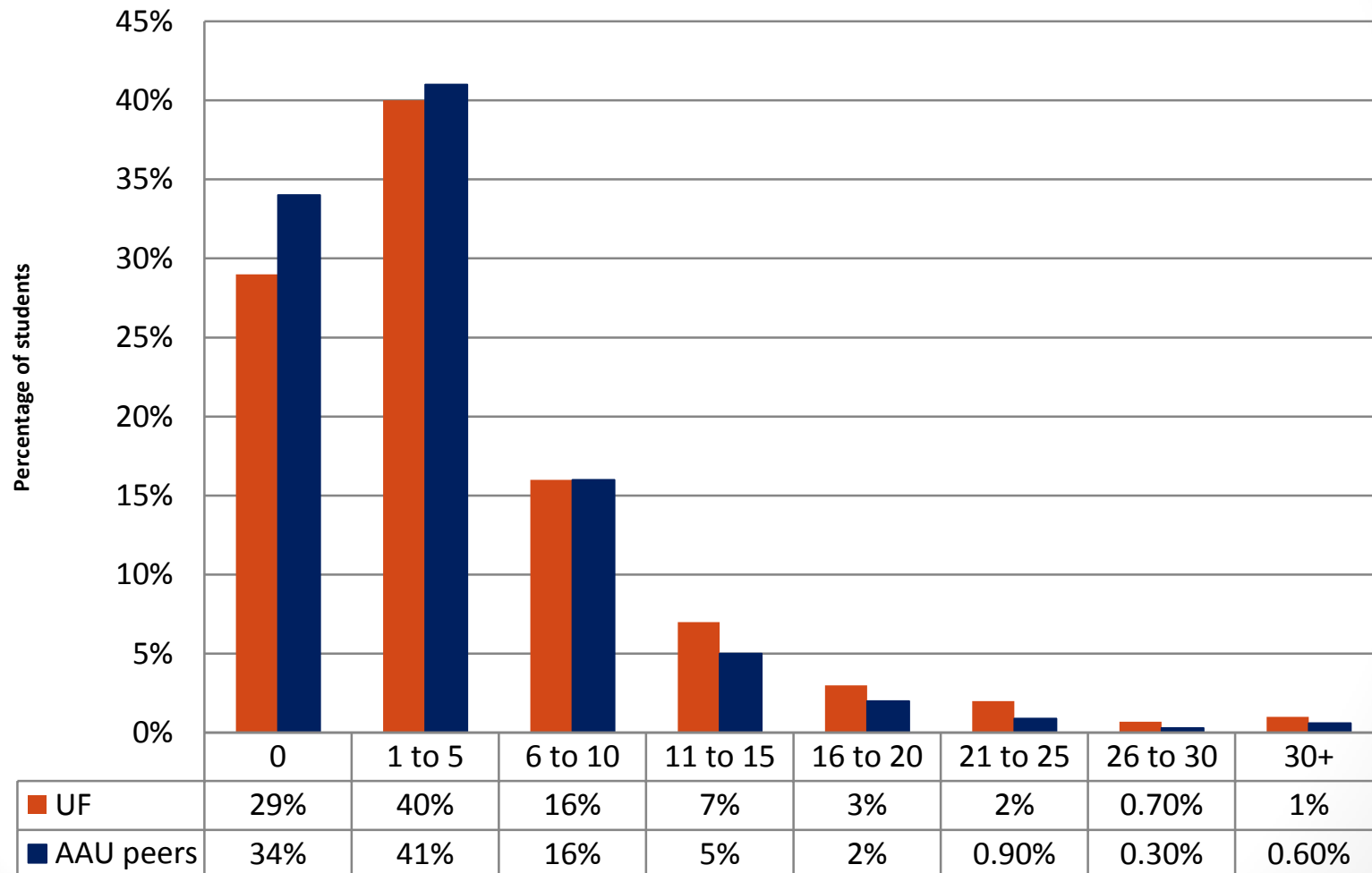
Hours participating in student organizations per week



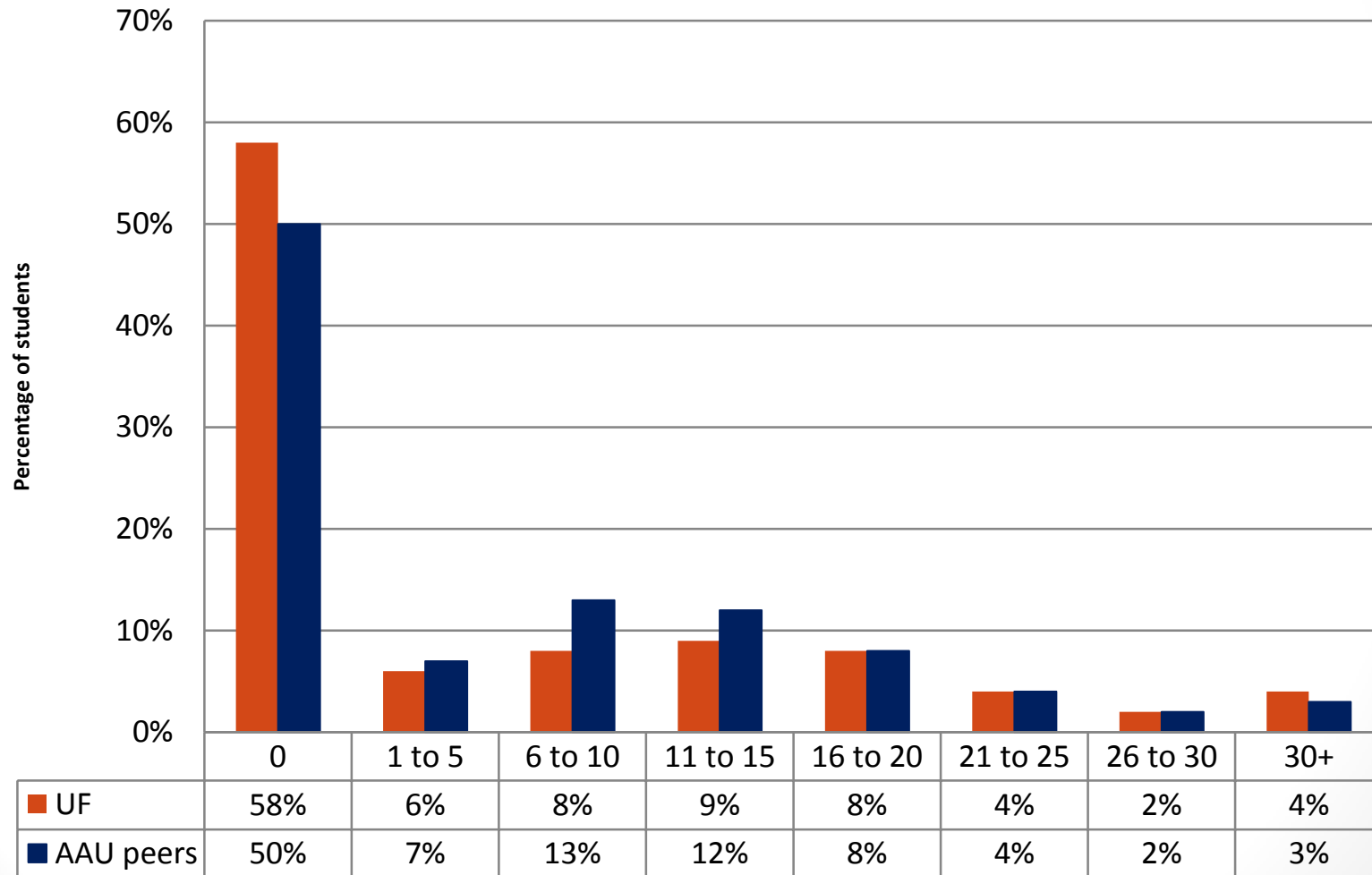
Hours exercising/ recreational sports per week



Hours partying per week



Hours working each week



Other data from SERU 2011

- Students who are officers or members of student organizations have higher GPA's than those who are not involved (3.44/3.43 v. 3.21)
- Students who live on campus have higher GPA's than those who do not (3.3 v. 3.2)
- Sorority and fraternity members are the most satisfied with their UF experience: 46% v. 25% are very satisfied with their overall social experience
- 77% agree or strongly agree that they would choose to enroll at UF if they had to do it over again



2011 results: UF compared to AAU peers



Satisfaction with (satisfied or very satisfied)	UF	AAU peers	Difference
Academic experience	61%	62%	-1%
Social experience	67%	61%	+6%
Value of your education for the price	63%	52%	+11%
Faculty quality	65%	68%	-3%
Advising by school/college staff	51%	49%	+2%
Access to small classes	47%	45%	+2%
Availability of courses for graduation	58%	53%	+5%

2011 results: UF compared to AAU peers



	UF	AAU peers	Difference
Experiences (have done or now doing)			
-- Research project, creative activity/paper in course	83%	87%	-4%
-- Course with international or global focus	42%	42%	0%
-- Know at least one faculty well enough for reference	80%	86%	-6%
-- Study 16 or more hours per week	31%	38%	-8%
Would still choose to enroll again (agree or strongly agree)	77%	72%	+5%
Feel that you belong at your institution (agree or strongly agree)	74%	69%	+5%
Important to graduate in four years (very important or essential)	48%	60%	-12%
Intend to go to graduate or professional school after graduation	56%	42%	+14%

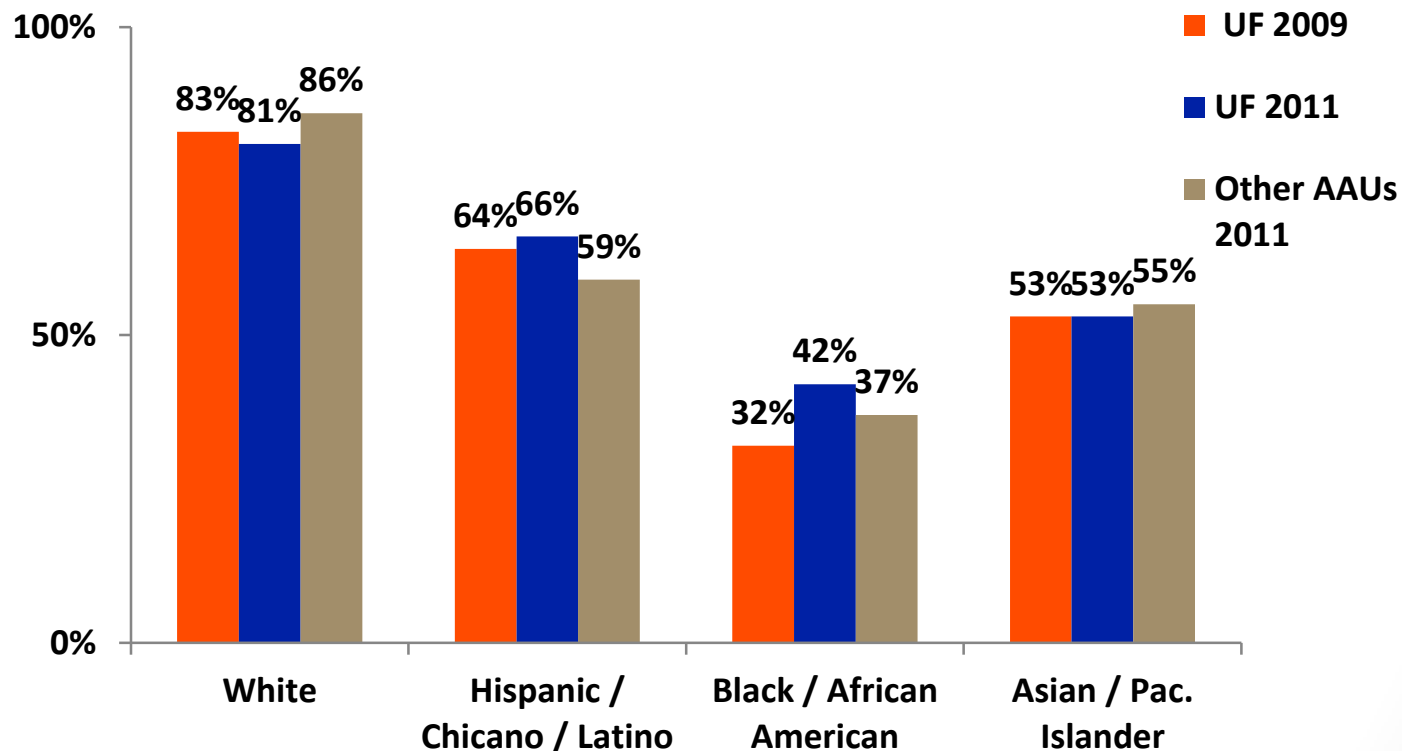
Use and Helpfulness (1-5 rating scale) of Student Services

Area	Use	Helpfulness	Rank of helpfulness (out of 19 services)
Academic Advising	87%	3.43	10
Recreational Sports	77%	4.23	2
Off Campus Tutoring	55%	4.24	1
Student Activities and Involvement	33%	3.64	6
On Campus Tutoring	26%	3.26	18
Counseling and Wellness Center	19%	3.44	9

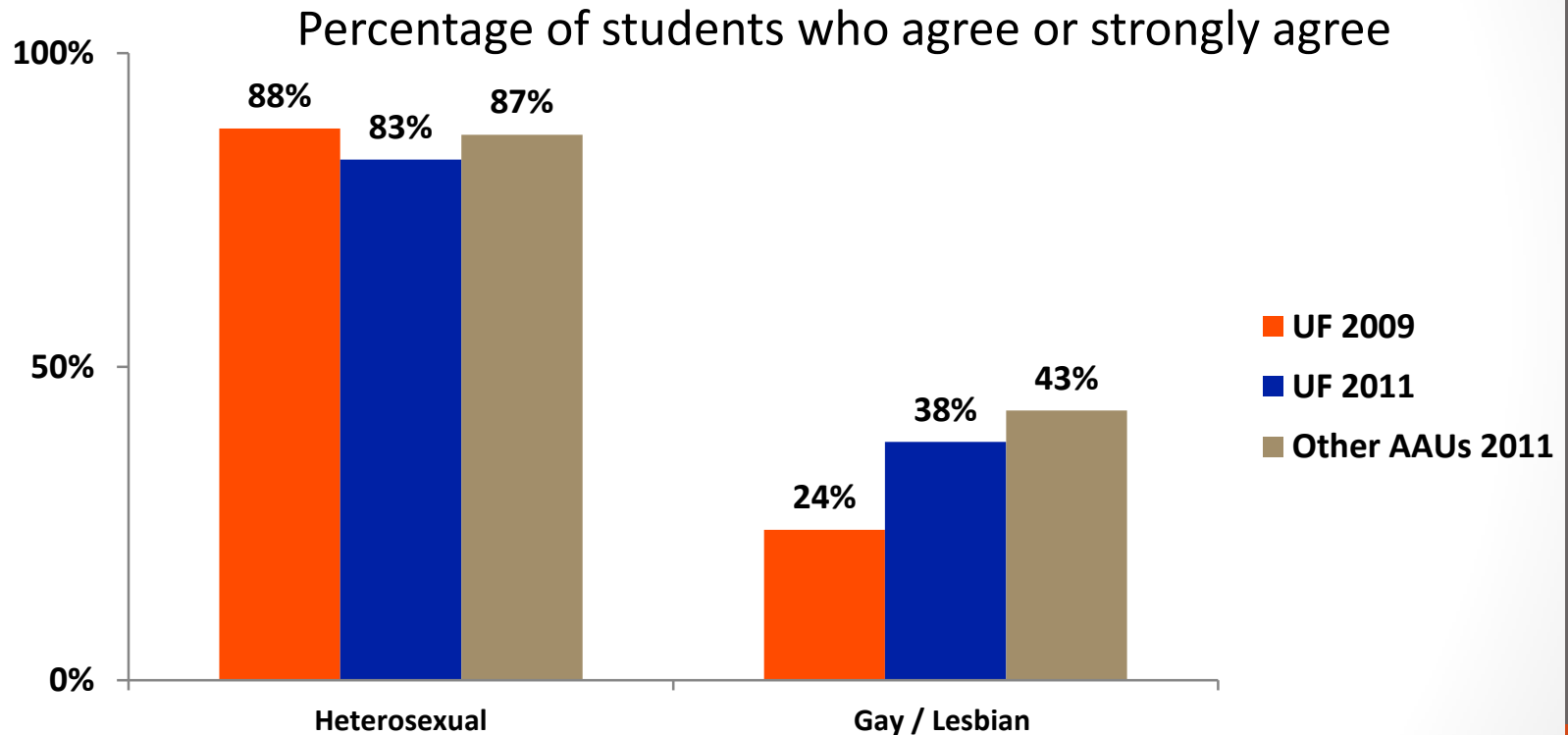
Students of My Race/ Ethnicity Are Respected on Campus



Percentage of students who agree or strongly agree



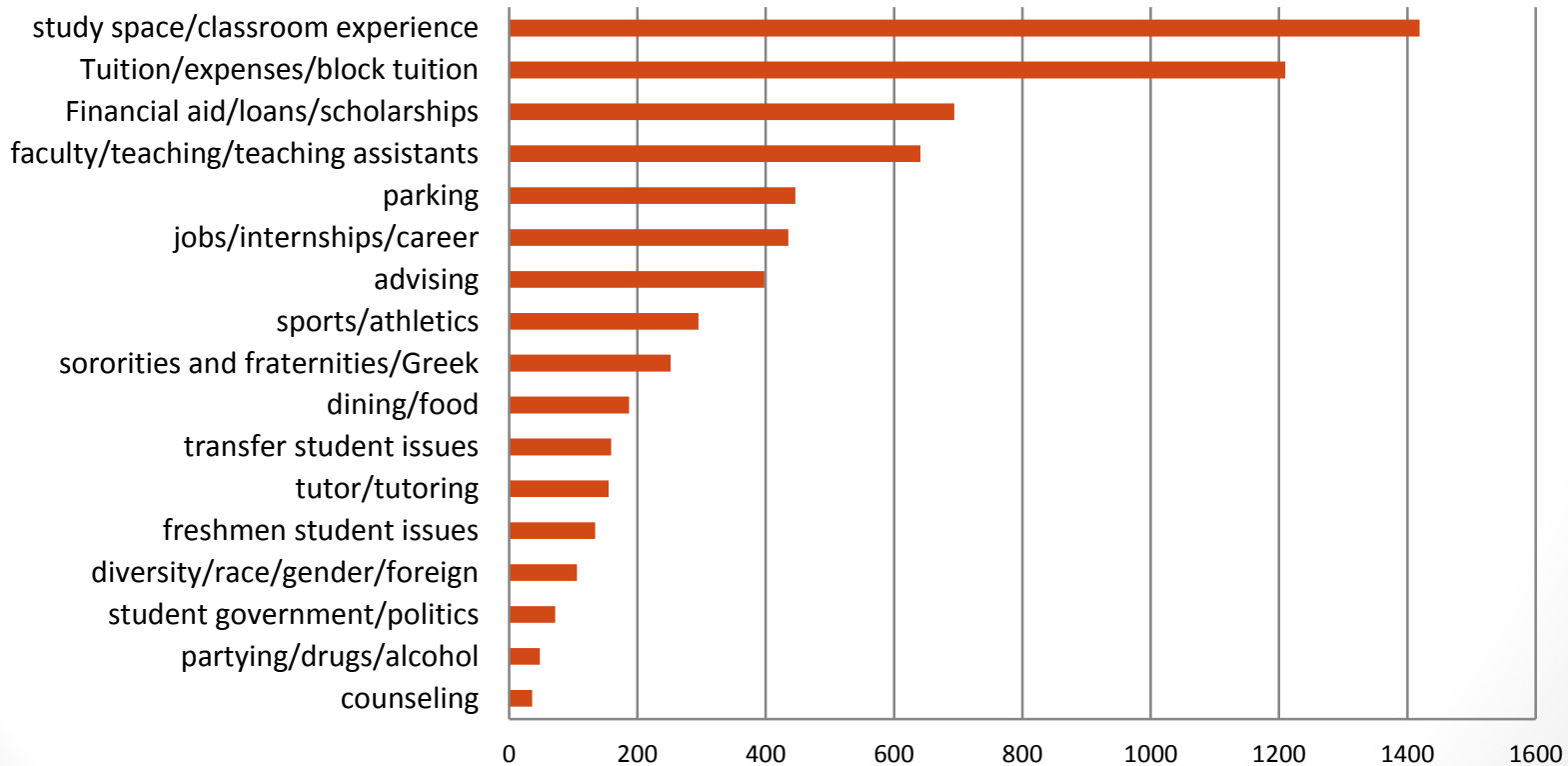
Students of My Sexual Orientation Are Respected on This Campus



Topics of Responses to Open Ended Question



What is the SINGLE, MOST IMPORTANT thing that your campus could realistically do to create a better undergraduate experience for students like you?"



Summary

- Students have capacity to study more
- Involved and engaged students perform better academically
- Students prefer off campus tutoring to on campus tutoring
- Students have lots of opinions about their academic experience
- Students appreciate the value of their education for the price



For more information...

- Student Experience in Research University (SERU) results: ir.ufl.edu (sortable by college and major)
- Graduation Exit Survey: ir.ufl.edu
- Student Affairs: ufsa.ufl.edu
- Contact Dr. Jeanna Mastrodicasa, jmastro@ufl.edu, 392-1265, 155 Tigert Hall