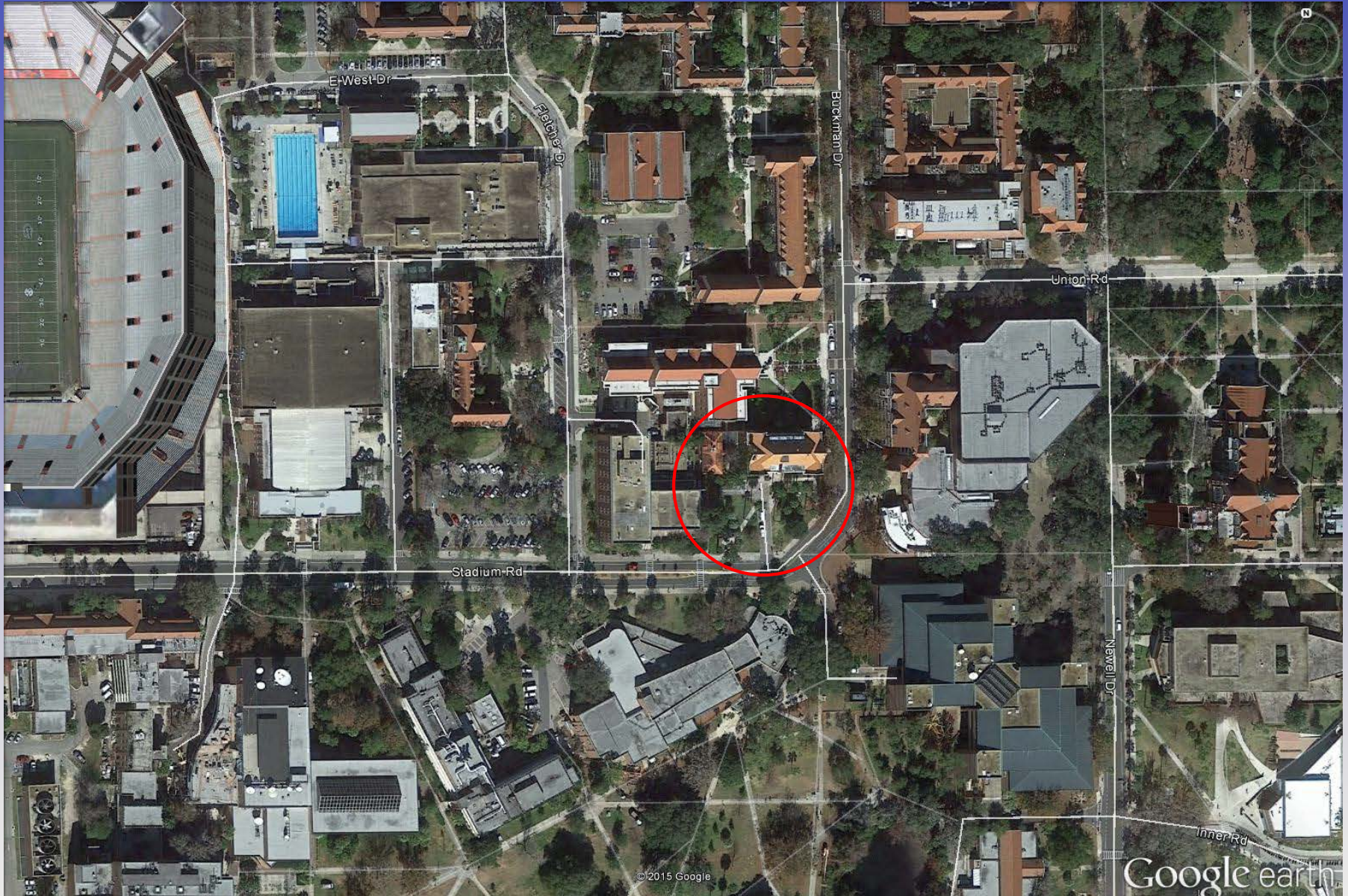


# Newell Hall Renovation

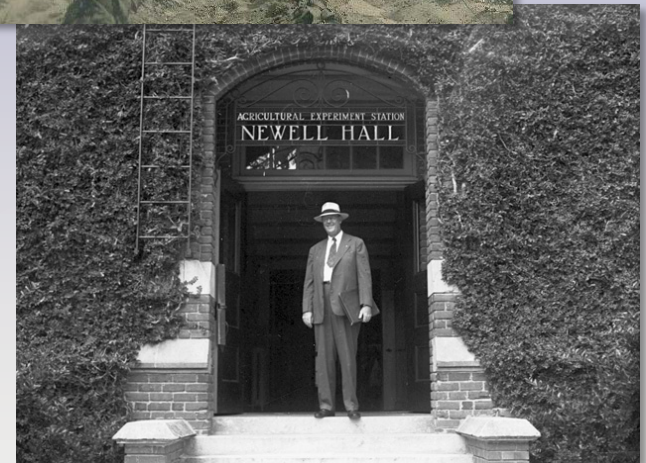
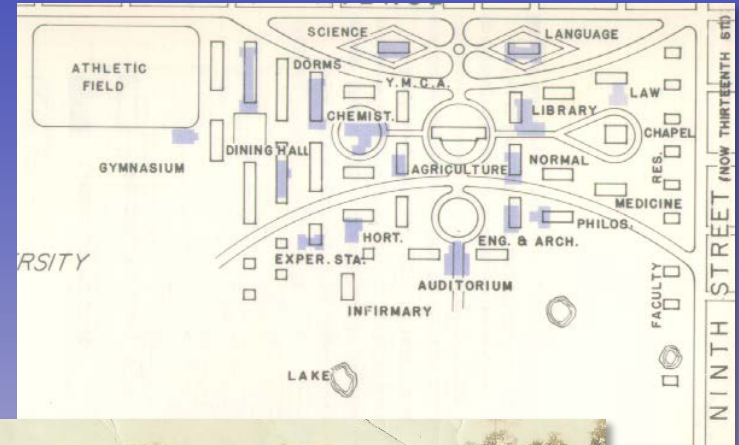
{ UF Faculty Senate December 10, 2015

# Location



# Background

- **3<sup>rd</sup> oldest building on campus ... constructed in 1910 as Ag Experiment Station**
- **Closed, shored, re-opened, and re-closed between 1934 and 1942**
- **Renovated and reopened in 1944 as Newell Hall**
- **IFAS labs until vacancy in 2012**



# Scope & Purpose/Program



- Complete interior renovation – including central HVAC – to create a *Learning Commons* for undergrad/grad students
- Exterior rehab/repairs
- Sitework, utilities, creation of courtyard (south)
- New Annex (~**10,000** GSF) for “core” functions + food service

# Site Development

- Improve safety & accessibility
- Eliminate service drive
- Create usable courtyard (LC extension)
- Enhance food service with outdoor seating



# Site Development

## Improve Safety & Accessibility

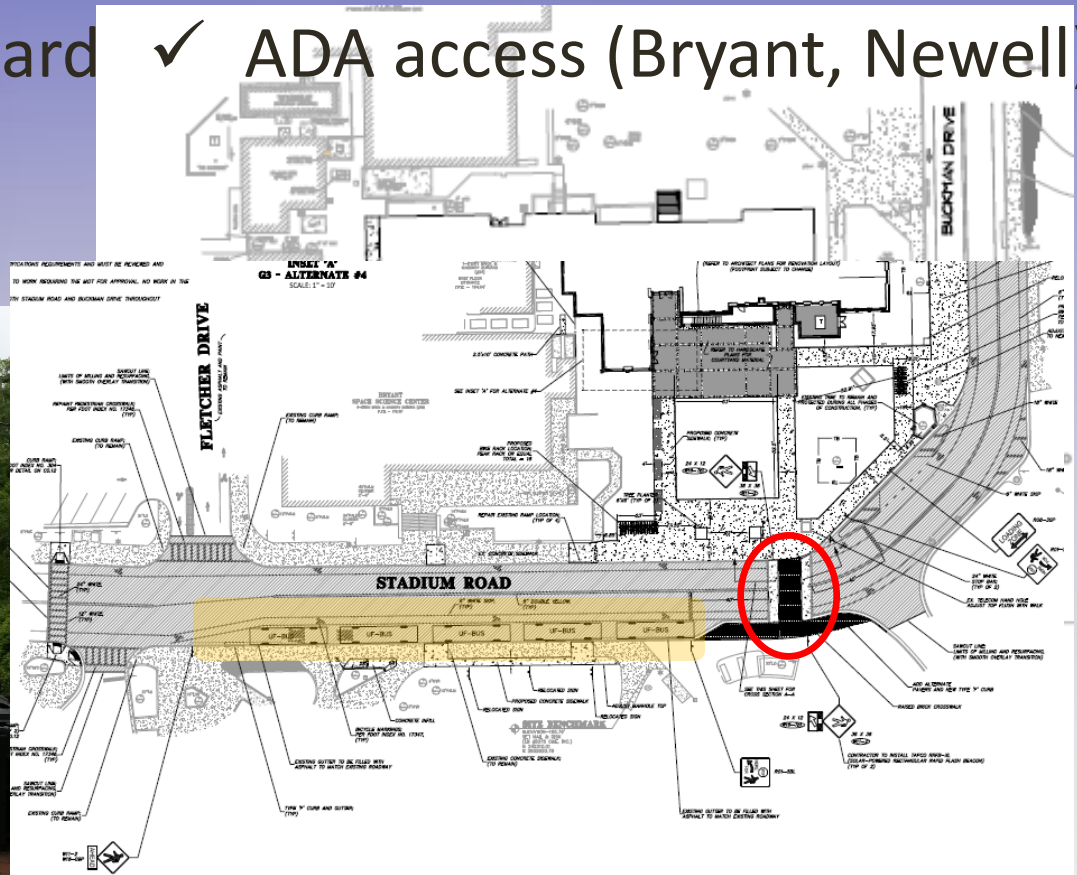
- Awkward double curve
- Bus queueing
- Bike lane curb
- Too many crosswalks
- High traffic for peds, bikes, service vehicles, etc.



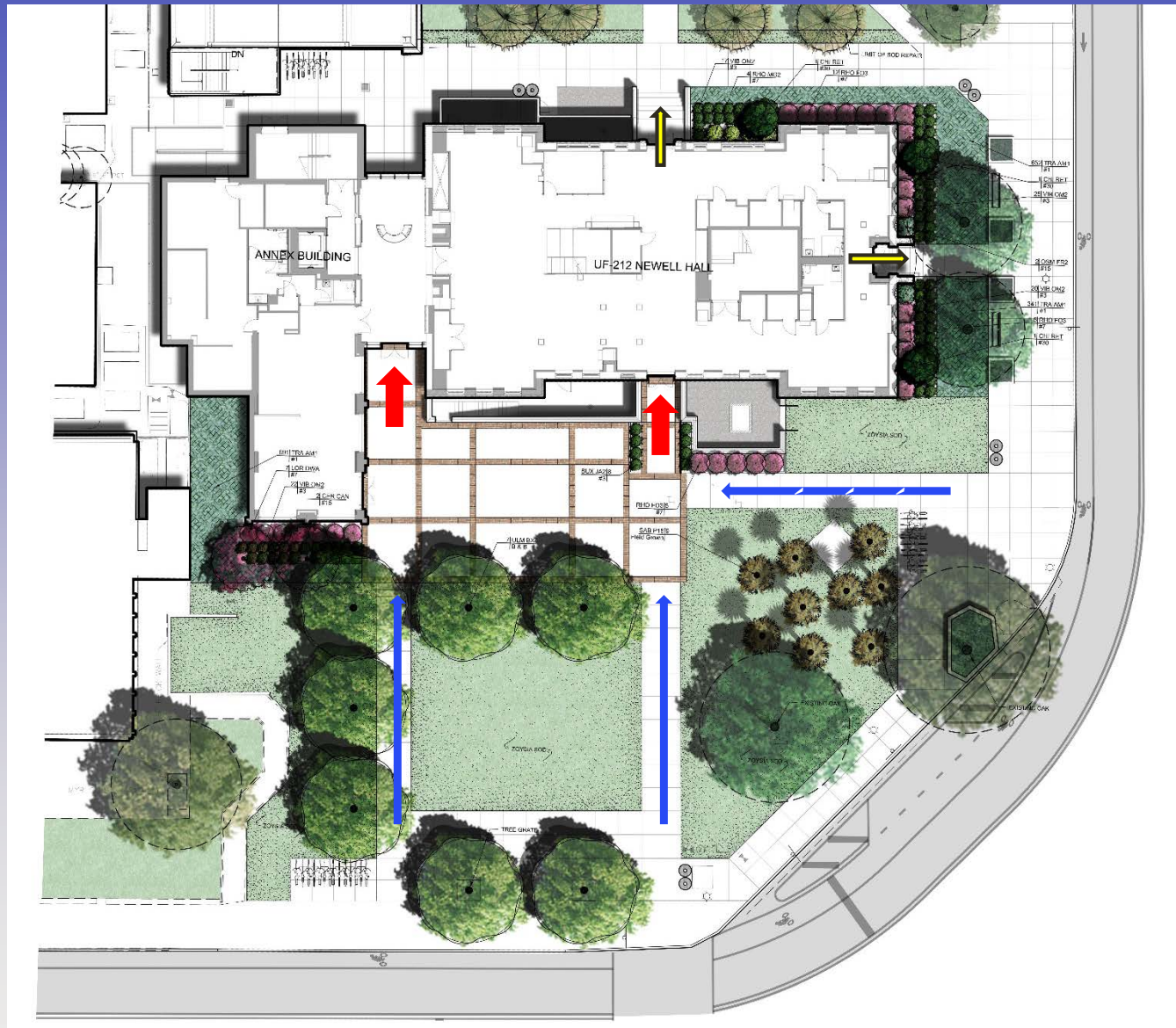
# Site Development

## Improve Safety & Accessibility

- ✓ Restripe road
- ✓ Eliminate raised median
- ✓ Shift bus queue westward
- ✓ Widen sidewalk at Hub
- ✓ Single prominent crosswalk
- ✓ ADA access (Bryant, Newell)



# Site Plan









# Exterior Design – South Elevation



# Exterior Design – North Elevation



# Learning Commons

Some classroom, lab, and library-ish *study* space at UF ... students seek *learning* space for

Collaboration

Focus

Interaction

Rejuvenation



This is consistent with research on how today's & tomorrow's students learn ... AND how the world they'll enter works (e.g., Google)





# Status / Schedule

- Mold and haz/mat removal complete
- Reviews by UF committee and DHR ongoing
- Student Advisory Board appointed
- SD deliverable May 20
- Design through early 2016
- Mobilized 11/16/15 to begin sitework & demo
- Complete/occupy Spring 2017





# QUESTIONS?

