

The Harn Museum Of Art at UF

A faculty resource for teaching across the curriculum



HARN MUSEUM OF ART

UNIVERSITY OF FLORIDA

FACULTY SURVEY

Harn Museum of Art

Eric Segal esegal@ufl.edu www.harn.ufl.edu

As a biologist this is rarely a natural combination. However, I like the idea . . .

I haven't had time to re-tool my courses to include new material.

The museum is too far from my college to send students. But I think it's a great idea in a perfect world. I teach nursing . . .

I don't know what's available to be used.



. . .
I would like to explore the crossover between art and science, especially as it pertains to the plant world.

Samuel P. Harn Museum of Art: EXHIBITIONS: Current Exhibitions - Mozilla Firefox

File Edit View History Bookmarks Tools Help

Samuel P. Harn Museum of Art: EXHIBITION... +

http://www.harn.ufl.edu/exhibitions/



EXHIBITIONS

VISIT EXHIBITIONS COLLECTIONS EDUCATION SUPPORT ABOUT NEWS AUDIO | VIDEO

Current Ex

- Home Page
- Current
- Future
- Past


Sebastião Salgado: World Witness
July 19, 2011 - May 27, 2012

The Mind's Eye, 50 Years of Photography by Jerry Uelsmann
June 14, 2011 - September 11, 2011


Alchemy: From Dust to Form
March 1, 2011 - September 11, 2011

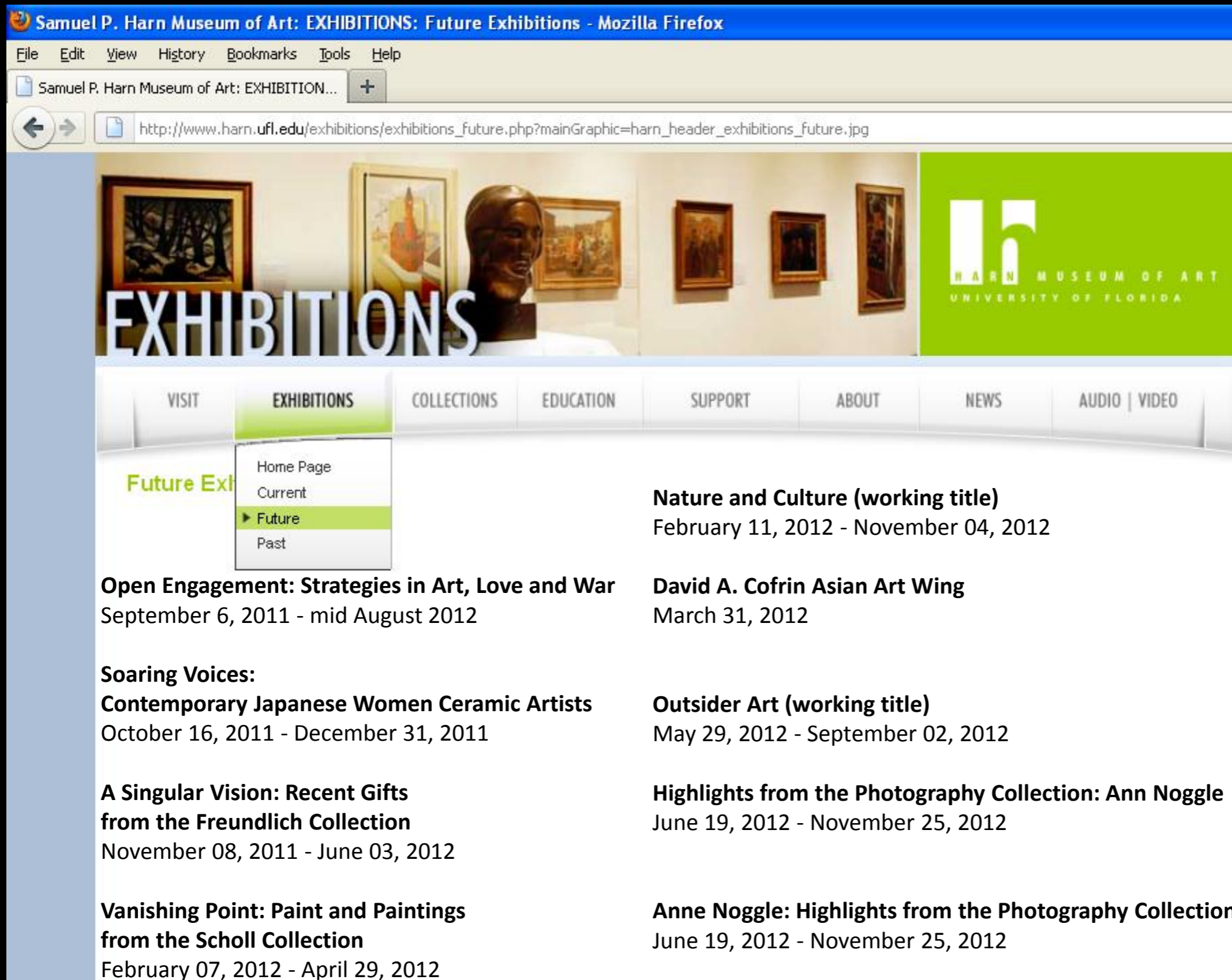
A Sense of Place: African Interiors
Ongoing

Highlights from the Asian Collection
Ongoing



Jerry Uelsmann, Dream Theater, 2004, pigment inkjet print [Epson]
Gift of Jerry N. Uelsmann and Maggie Taylor





Samuel P. Harn Museum of Art: EXHIBITIONS: Future Exhibitions - Mozilla Firefox

File Edit View History Bookmarks Tools Help

Samuel P. Harn Museum of Art: EXHIBITION...

http://www.harn.ufl.edu/exhibitions/exhibitions_future.php?mainGraphic=harn_header_exhibitions_future.jpg

EXHIBITIONS

VISIT **EXHIBITIONS** COLLECTIONS EDUCATION SUPPORT ABOUT NEWS AUDIO | VIDEO

Future Exh

- Home Page
- Current
- Future**
- Past

Open Engagement: Strategies in Art, Love and War
September 6, 2011 - mid August 2012

Soaring Voices:
Contemporary Japanese Women Ceramic Artists
October 16, 2011 - December 31, 2011

A Singular Vision: Recent Gifts from the Freundlich Collection
November 08, 2011 - June 03, 2012

Vanishing Point: Paint and Paintings from the Scholl Collection
February 07, 2012 - April 29, 2012

Nature and Culture (working title)
February 11, 2012 - November 04, 2012

David A. Cofrin Asian Art Wing
March 31, 2012

Outsider Art (working title)
May 29, 2012 - September 02, 2012

Highlights from the Photography Collection: Ann Noggle
June 19, 2012 - November 25, 2012

Anne Noggle: Highlights from the Photography Collection
June 19, 2012 - November 25, 2012

THE COLLECTION

Harn Museum of Art

Eric Segal esegal@ufl.edu www.harn.ufl.edu

Five collecting areas

African

Asian

Contemporary

Modern

Photography



Jonathan Borofsky

Hammering Man at 2,938,405

1984, Corten steel

24 ft. x 11 ft. x 24 in., 7600 lb.

(731.5 x 335.3 x 61 cm., 3447.3 kg)

Gift of the Martin Z. Margulies Foundation

THE COLLECTION

Harn Museum of Art

Eric Segal esegal@ufl.edu www.harn.ufl.edu

Five collecting areas

. . . as well as
prints,
Latin American art,
Precolumbian art,
some ancient ceramics
and coins.

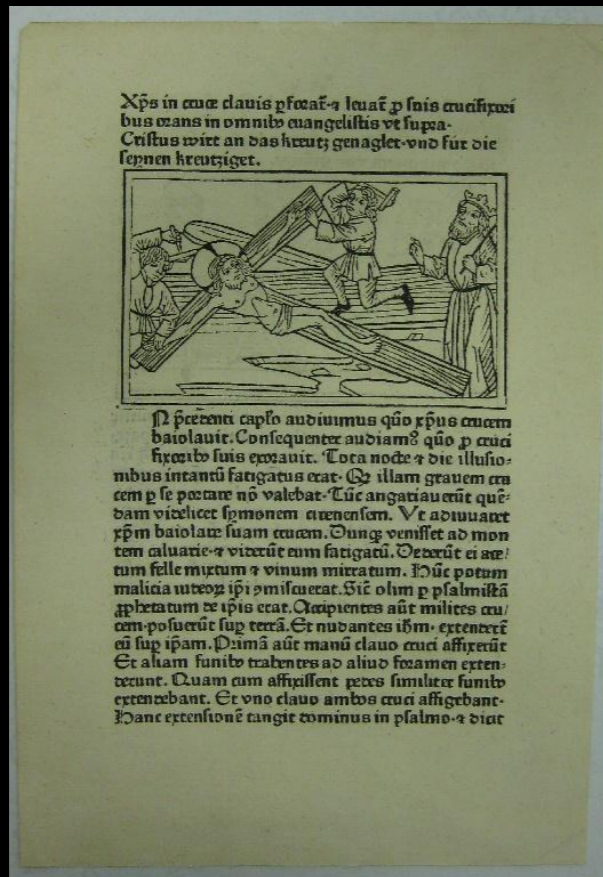
African

Asian

Contemporary

Modern

Photography



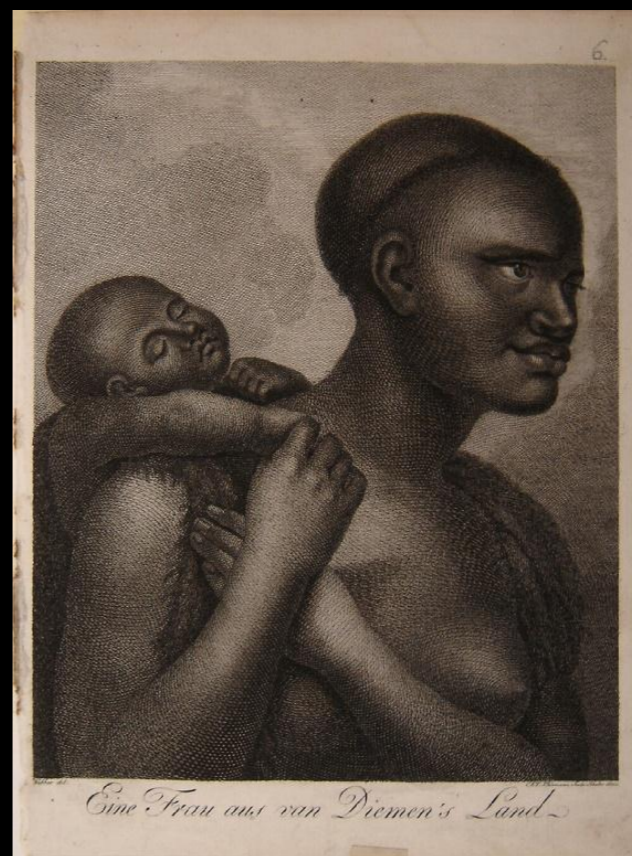
Speculum Humanae Salvationis. European (Augustburg). 1473
Woodcut, one engraved page. 10 3/4 x 7 1/4 in.



Albrecht Dürer, German, 1471 – 1528.
Joachim's Offering Rejected by the High Priest. c. 1504
Woodcut. 12 1/8 x 8 7/8 in.



William Hogarth, English, 1697 – 1764.
O the Roast Beef of Old England & C. 1749.
Engraving. 15 1/4 x 18 1/4 in.



John Webber, English, 1751 – 1793. *Eine Frau aus van Diemen's Land*
Engraving, n.d. 8 1/4 x 6 3/4 in.



José Guadalupe Posada
Untitled., n.d.
Woodblock print 9 1/2 x 6 1/4 in.



Giovanni Battista Piranesi, Italian, 1720 – 1778
Plate from the *Carceri* Series. 1750.
Etching. image: 16 1/2 x 21 1/2 in.



Maria Sibylla Merian, German, 1647 – 1717.
Plate 61, "Metamorphosis Insectorum Surinamensium", 1705.
16 x 20 in. Engraving, hand colored,



Francisco de Goya, Spanish, 1746 – 1828.
What a Tailor Can Do! / Lo que puede un sastre!
(from *Los Caprichos*, plate 52). 1796-1797.
Etching and aquatint. image: 8 1/2 x 6 in.



COLLECTIONS

- VISIT
- EXHIBITIONS
- COLLECTIONS
- EDUCATION
- SUPPORT
- ABOUT
- NEWS
- AUDIO | VIDEO

Quick Search ?

- Collections
- Search
- Simple Search
 - Advanced/Objects
 - Advanced/People
- People
- Sign on

'urban' (1 group(s) found) » [\[\[missing key: simplesearch.module.objects-breadcrumb\]\]](#)

Simple Search

[Hide](#)

Modules	Query
<ul style="list-style-type: none"> Objects People 	<input type="text" value="urban"/>
	<input type="submit" value="Submit"/>
	<input type="checkbox"/> Search Within Results

First Previous 1 2 3 4 Next Last

[view lightbox](#) [view list](#) [view single item](#)



[In the Halls of Justice \(Dreaming in Cuba series\)](#)



[Untitled #2424-B](#)



[Tianqis Aerial Reflex](#)



[Three Men at Union Square](#)

Powered by **eMuseum**

UF CLASSES AT THE HARN

Harn Museum of Art

Eric Segal esegal@ufl.edu www.harn.ufl.edu

The Harn's collections, building, and staff are available to support instruction.

Medical observation through visual analysis

Engineering for global markets

Political conflict through prints

The geography of aesthetics

Cultural history of the body

The Illustration of botany

Perceptual psychology

The biology of vision

Visualizing history

Economy of art

Cultural tourism



TOURS OF THE MUSEUM

Harn Museum of Art

Eric Segal esegal@ufl.edu www.harn.ufl.edu

- Free guided tours at 2 p.m. every Saturday and Sunday
- Customized, guided tours by appointment in advance
- Curators, members of the education staff and museum docents can tailor tours to stimulate lively discussion about concepts, themes and issues related to your content.
- Resources and training for faculty who want to teach in the museum and lead their own tours.



TEACHING FACILITIES

Harn Museum of Art

Eric Segal esegal@ufl.edu www.harn.ufl.edu

Object Study Rooms:
reserved space for
students to examine
selected art works from
collection storage on
their own.



Print & Photograph Cabinet: faculty
may have works placed in the case
located in the galleries.

Flexible spaces to meet with classes and Harn staff.



EXHIBITION OPPORTUNITIES

Harn Museum of Art

Eric Segal esegal@ufl.edu www.harn.ufl.edu

Faculty developed small-scale exhibitions in support of research and teaching.

Funded by the Dr. Madelyn M. Lockhart Endowment for Faculty Focus Exhibitions.



INTERNSHIPS

Harn Museum of Art

Eric Segal esegal@ufl.edu www.harn.ufl.edu

Internships for students from all majors – Fall, Spring & Summer



Information Technology at the Art museum. **Business & Finance** at the Art museum. **Education** at the Art museum. **Horticulture** at the Art museum. **Health** at the Art museum. **Art History** at the Art museum. **Human Resources** at the Art museum. **Development** at the Art museum. **Events Management** at the Art museum. **Marketing & PR** at the Art museum. **Graphic Design** at the Art museum. **Photography & Video** at the Art museum. **Retail Management** at the Art museum. **Legal** at the Art museum. **YOU** at the Art museum.

CAMELLIA COURT CAFE

Harn Museum of Art

Eric Segal esegal@ufl.edu www.harn.ufl.edu

- Featuring soups, sandwiches, salads and tapas, beer and wine, and amazing desserts!
- Use your faculty meal plan!
- Open daily, 11 a.m. – 3 p.m.



MUSEUM NIGHTS

2nd Thursday of each month

Made possible by the generous support of the University of Florida Office of the Provost, Honors Program and Student Government.

Harn Museum of Art

Eric Segal esegal@ufl.edu www.harn.ufl.edu

The museum comes alive at night with performances, lectures, special events, music, food and art. Free and open until 9 p.m.



FACULTY SURVEY

Harn Museum of Art

Eric Segal esegal@ufl.edu www.harn.ufl.edu

As a biologist this is rarely a natural combination. However, I like the idea . . .

The museum is too far from my college to send students. But I think it's a great idea in a perfect world. I teach nursing . . .

I haven't had time to re-tool my courses to include new material.

I don't know what's available to be used.

. . .
I would like to explore the crossover between art and science, especially as it pertains to the plant world.



Harn Museum of Art

Eric Segal
esegal@harn.ufl.edu
392-9826 x2115

www.harn.ufl.edu

(free admission)