

University Libraries Committee Minutes
November 30, 2015

Members Present: Angela Bacsik, Silvio dos Santos, Anthony Gonzalez, Preston Jones, Maria Mamalui-Hunter (by phone), Kellie Roberts, Brandon Rosenthal, Jeffrey Roth, John Yelton, Kenneth Weyrauch

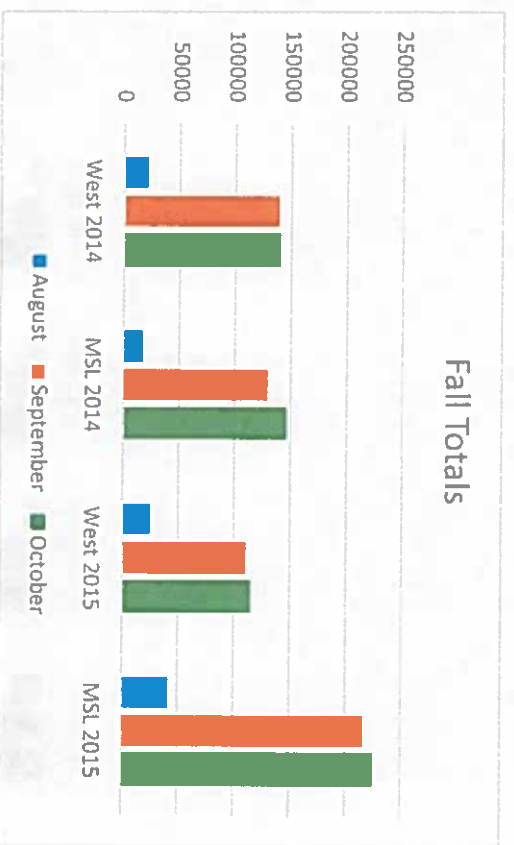
Also Present: Lela Johnson (taking minutes), Ann Lindel

Members Absent: Suvigya Awasthi, Richard Bennett, Melissa Johnson

- I Approval of October Minutes – Minutes were not discussed
- II Succession Planning
 - a. Vice-Chair Election – tabled until Spring 2016 meeting
 - b. New Chair for Next Year – tabled until Spring 2016 meeting
- III Dean’s Report
 - a. Elsevier Pilot Project Update – See attached handout
 - b. Budget Update – nothing to report
 - c. Library West & MSL Stats – See attached handout
 - a. Q: Is MSL more accessible? A: From the dorms, yes
 - b. Q: Have you heard anything about network issues? A: No, but Academic Technology should be receiving that information. Judy will find out more about this.
 - c. Survey may be done to find out more about accessibility
- IV Additional Agenda Topics
 - a. Update from Silvio dos Santos – just from speaking to his faculty he gets the impression that they are worried about funding, and do not want to take the extra steps and are worried about peer reviews. Judy said that the library has people that can help with those steps, like clearing copy right and funding for clearing license issues. Q: How can the faculty be more informed about what the library has to offer? A: Your liaison librarian.
 - b. SEC Open Education Resource update with Preston Jones
- V Wrap-up/Agenda topics for Spring Meetings
 - a. Vice-Chair Election
 - b. Open Access – Elsevier Update
 - c. Lela to send out poll for Spring 2016 dates
- VI University Library Committee Tour of the AFA Library

Fall Totals	West 2014	MSL 2014	West 2015	MSL 2015
August	20,163	16,253	24,334	40,681
September	138,758	129,336	110,487	215,717
October	139,326	145,489	114,293	224,154
Total	298,247	291,078	249,114	480,552

(Excludes Summer Semester and Break Weeks)



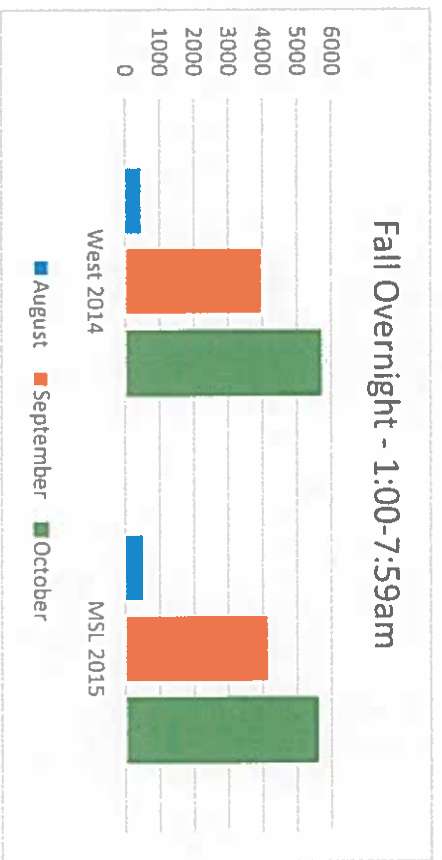
People Counter-Overnight Occupancy in Marston, Through October 2015

2015	Average	Max
1:00:00 AM	237	528
2:00:00 AM	120	273
3:00:00 AM	59	172
4:00:00 AM	27	89
5:00:00 AM	10	72
6:00:00 AM	10	70
7:00:00 AM	44	122

Fall Overnight (1:00-7:59am) **West 2014** **MSL 2015**

(Excludes Summer Semester and Semester Break Weeks)

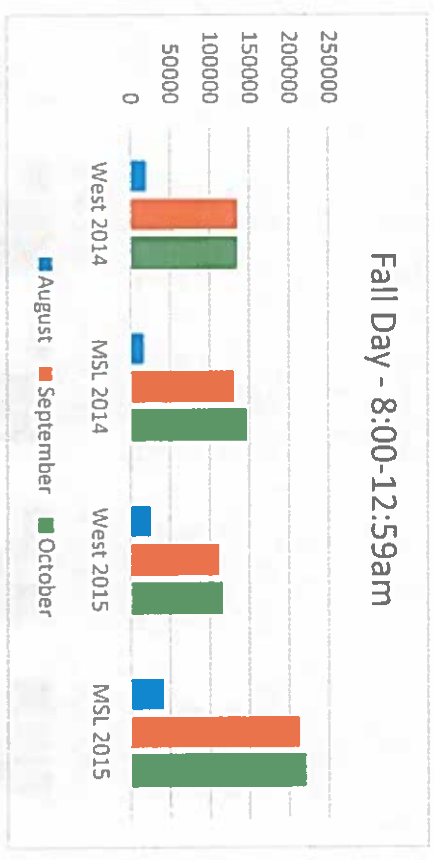
August	441	483
September	3,945	4,110
October	5,678	5,574
Total	10,064	10,167



Fall Day (8:00-12:59am) **West 2014** **MSL 2014** **West 2015** **MSL 2015**

(Excludes Summer Semester and Break Weeks)

August	19,722	16,253	24,334	40,198
September	134,813	129,336	110,487	211,607
October	133,648	145,489	114,293	218,580
Total	288,183	291,078	249,114	470,385





**Sharing Scholarly Journal Articles
Through University Institutional
Repositories Using Publisher
Supplied Data and Links:**

UF George A. Smathers
Libraries
UNIVERSITY of FLORIDA

**A Bilateral Project Between the
University of Florida and Elsevier for
Access to Articles by UF Authors**

Judy Russell & Ben Walker
University of Florida
Alicia Wise
Elsevier
Charleston Conference
November 2015

Empowering Knowledge

University of Florida Elsevier

University of Florida and Elsevier Pilot Project

Pilot API infrastructure delivers enhanced repository services

- Elsevier has developed APIs that IR managers can leverage to meet funder policies for public access and enhance the user experience.
- University of Florida is implementing a prototype to download metadata and searchable full text for articles by UF authors to include in the IR@UF.
- The pilot partners are testing the integration and application of the APIs and working to design the user experience and interfaces.

1

University of Florida Elsevier

Elsevier APIs for Institutional Repositories

Three ScienceDirect APIs:

1. Content Identification API
2. Entitlements API
3. Article retrieval API

Functions of the Elsevier APIs

1. Retrieve metadata, abstracts and full text for indexing for all articles from affiliated authors for comprehensive IR coverage (After January 2016, metadata will include embargo end dates to facilitate compliance with Elsevier's sharing and hosting policies)
2. Identify entitled and non-entitled users so they can be directed to the appropriate version of the article
3. Display final articles on IR pages (optional) Help users to access the for them best available version

2

University of Florida Elsevier

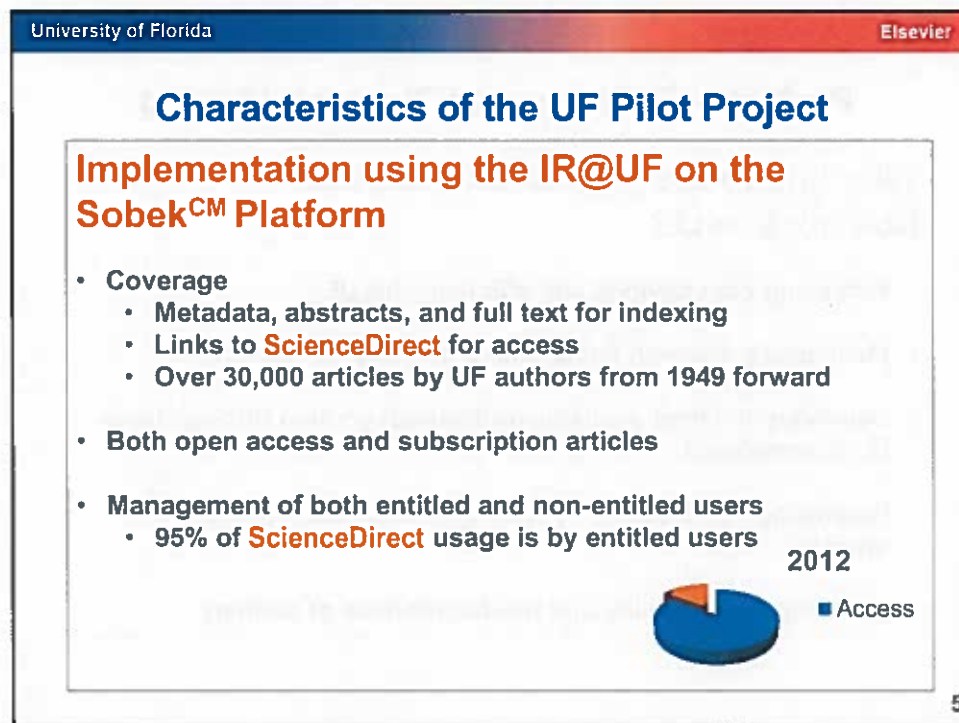
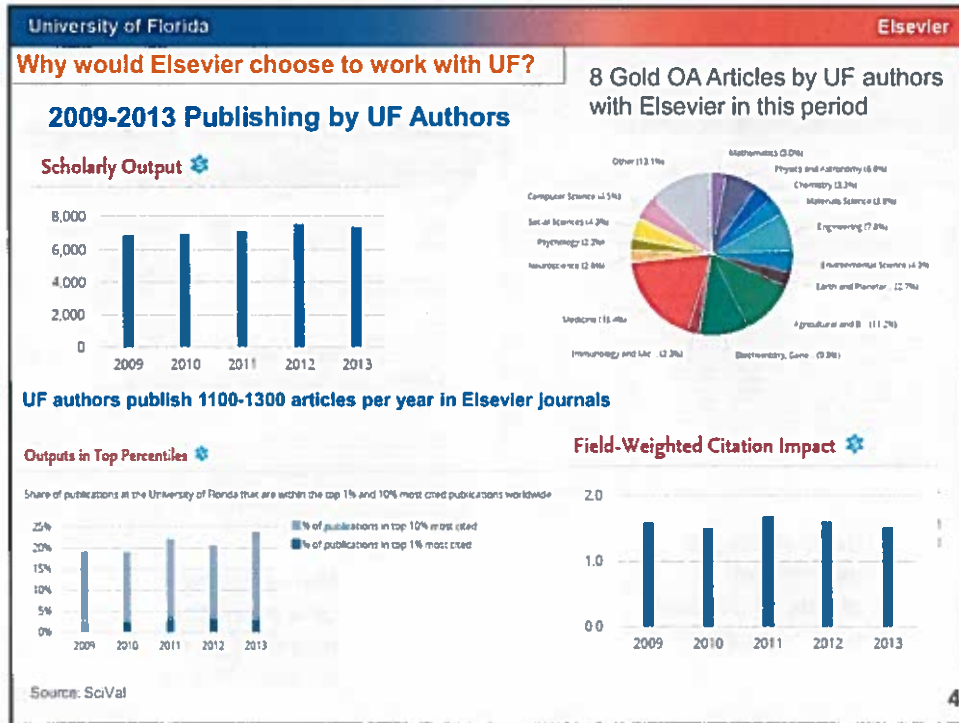
Why would UF choose to work with Elsevier?

Portfolio Analysis of University of Florida Articles by Publisher 2013

Bubble Size represent number of University of Florida published articles 2013

x-axis – shows the field weighted impact factor of each publisher divided by the average across all publishers, so a RFWCI of 1.0 means you have an average quality
 On the y-axis you have the share of all citations that the University of Florida authors receives.

3



University of Florida
Elsevier

Entitled users see the full article in context on ScienceDirect

Non-entitled users see the guest page on ScienceDirect

6

University of Florida
Elsevier

Project = Collaboration Through Linking

Why link to the published article on ScienceDirect?

- Achieving cost savings and efficiency for UF
- Maximizing research impact for articles by UF authors
- Delivering the best available (published) version through links to **ScienceDirect**
- Displaying the article in context with data sets and related articles
- Assuring the reliability and trustworthiness of content

7


Additional Characteristics of the UF Pilot Project

Using the article embargo date

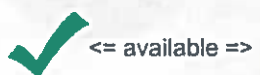
- An IR that includes author-deposited manuscripts will need to employ the embargo date to prevent non-affiliated users* from accessing to the manuscript during the embargo period.
- To do this effectively, the manuscript needs to be matched with the published article and the entitlement of the user must be determined before returning the search results.
- Once the embargo date is available in the Elsevier metadata, UF will be testing this using Sobek^{CM} functionality that currently manages embargoes for UF theses and dissertations.

8

Topics Still Under Discussion: Informing the User

- Elsevier prefers that UF to tag articles that are available to the user in the search results to provide positive communication.
- UF prefers to tag only articles that cannot be accessed (like embargoed U theses and dissertations).
- Elsevier also prefers that UF to advise a non-entitled user before they try to access restricted content and UF agrees.
- Both agree that it is beneficial to identify open access articles.
UF plans to use OA icon to do this. 

Various symbols are being considered.



<= available =>



requires payment or authentication =>



link to external content =>



9

University of Florida Elsevier


Demonstration of Prototype Live Access Q1 2016

<http://127.0.0.1:8080/>

10


University of Florida Elsevier

What UF & Elsevier want to learn from the pilot?

 **Institutional repositories:**

1. Are Elsevier's instructions to the IR administrators clear?
2. Is the implementation process simple?
3. How could the IR administrators' experience be improved?

To perfect our support materials and resources

 **Repository visitors:**


1. Where in the search process do researchers prefer to be alerted if they do, or do not, have access to the final article?
2. Which icons (with associated hover-over messages) do users prefer to indicate if they do, or do not, have access to the final article?
3. Do users appreciate seeing an icon identifying open access articles?

To provide implementation guidance and options to IRs

11

University of Florida Elsevier

What UF & Elsevier want to learn from the pilots?

 **Additional questions for repository visitors:**

4. Do IR users assume that all items in the search results are available for use unless otherwise noted?
5. Would users find the interface cluttered if it shows access icons on all available items in the search results, including published articles and other relevant IR@UF content?
6. Would users prefer finding the access icons only on external (published) article records?
7. Do users prefer to see icons on records for which a local (manuscript) version is also available? When given a choice, do they demonstrate a preference for the published article?
8. Do users from UF find access icons less valuable than users not affiliated with UF?

To provide implementation guidance and options to IRs

12

University of Florida Elsevier

Contact Us:

Judy Russell
University of Florida
jcrussell@ufl.edu
@JudyRussell

Ben Walker
University of Florida
bfwalker@ufl.edu

Alicia Wise
Elsevier
a.wise@elsevier.com
@wisealicia



*** Go Gators!**

* Mandatory in football season (and for most other occasions)