

IT Risk Management Update

02/22/2018

UF | Information Technology



Enterprise Risk Management vs. IT Risk Management

Enterprise Risk Management (ERM) addresses the full spectrum of risk in an interrelated risk portfolio, including but not limited to:

- Financial
- Operational
 - Information Technology
 - Other
- Strategic
- Regulatory
- Environmental
- Reputational
- Political

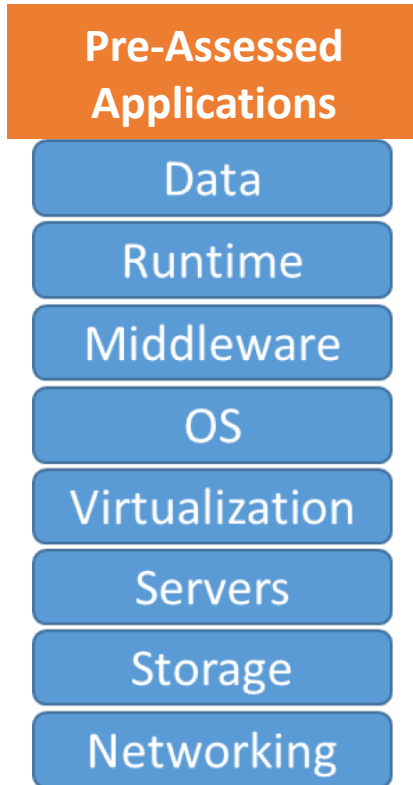
IT Risk Management is the process of identifying risk, assessing risk, and taking steps to reduce IT risk to an acceptable level. Process participants include:

- Privacy
- Procurement
- Principal Investigator
- **Information Technology**
- General Counsel
- Organizational Unit
- Institutional Review Board
- Vendor

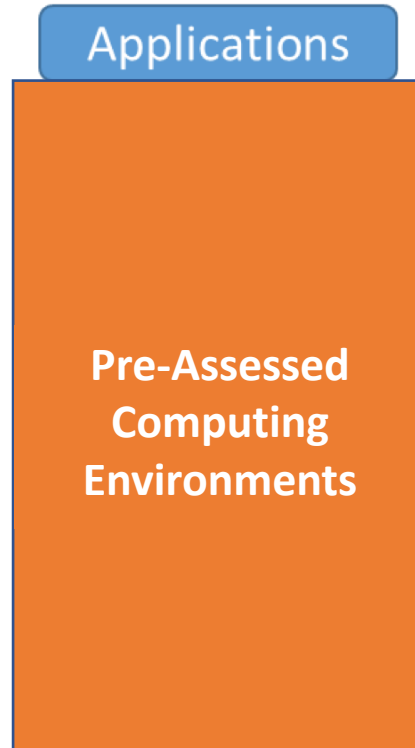


UF Strategy

Provide Options Not Requiring Review



**Large Portfolio of
Pre-Assessed
Applications**



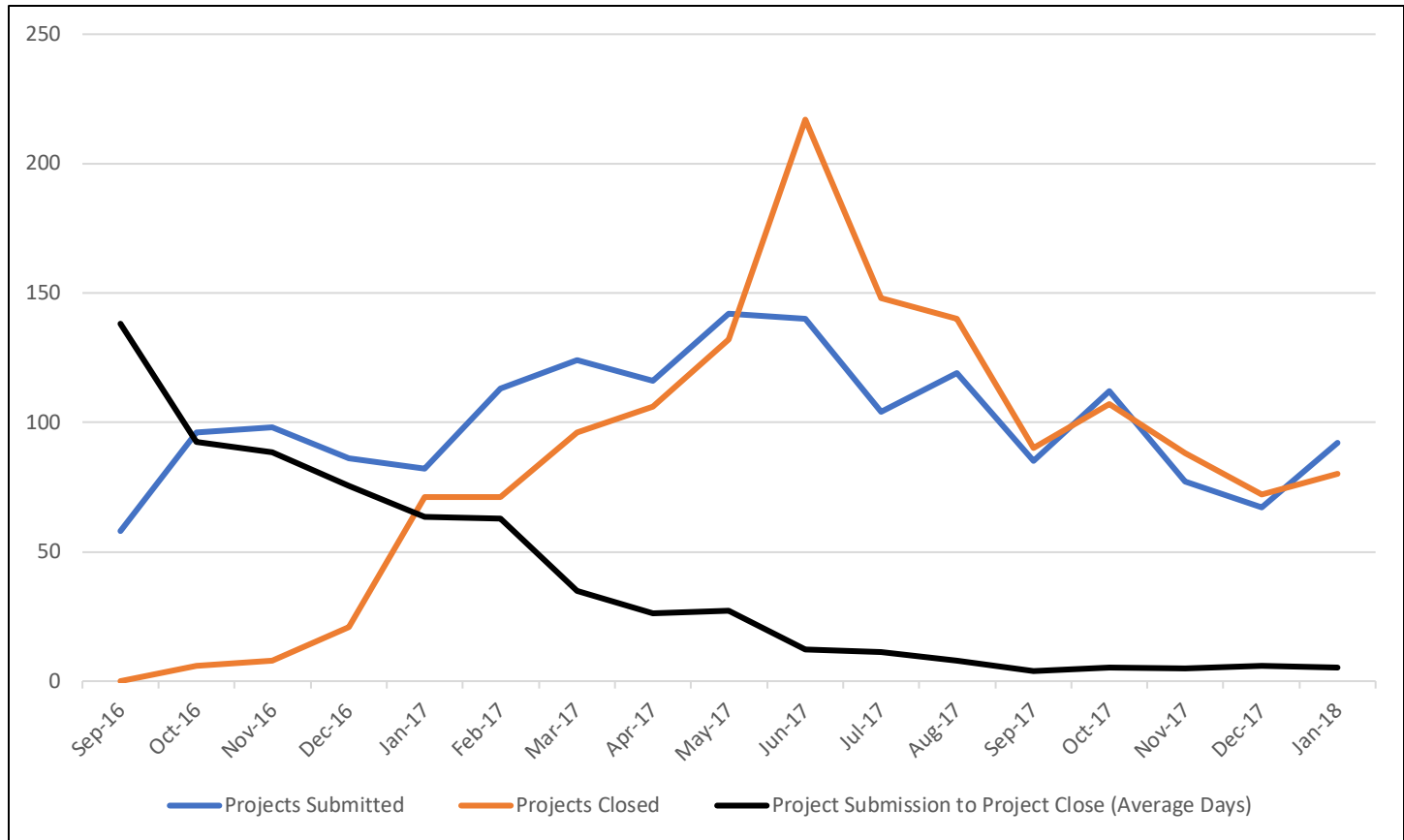
**Pre-Assessed
Computing
Environments of
Various Security Levels**



**Well Defined University
Computing Standards
and Strategy**

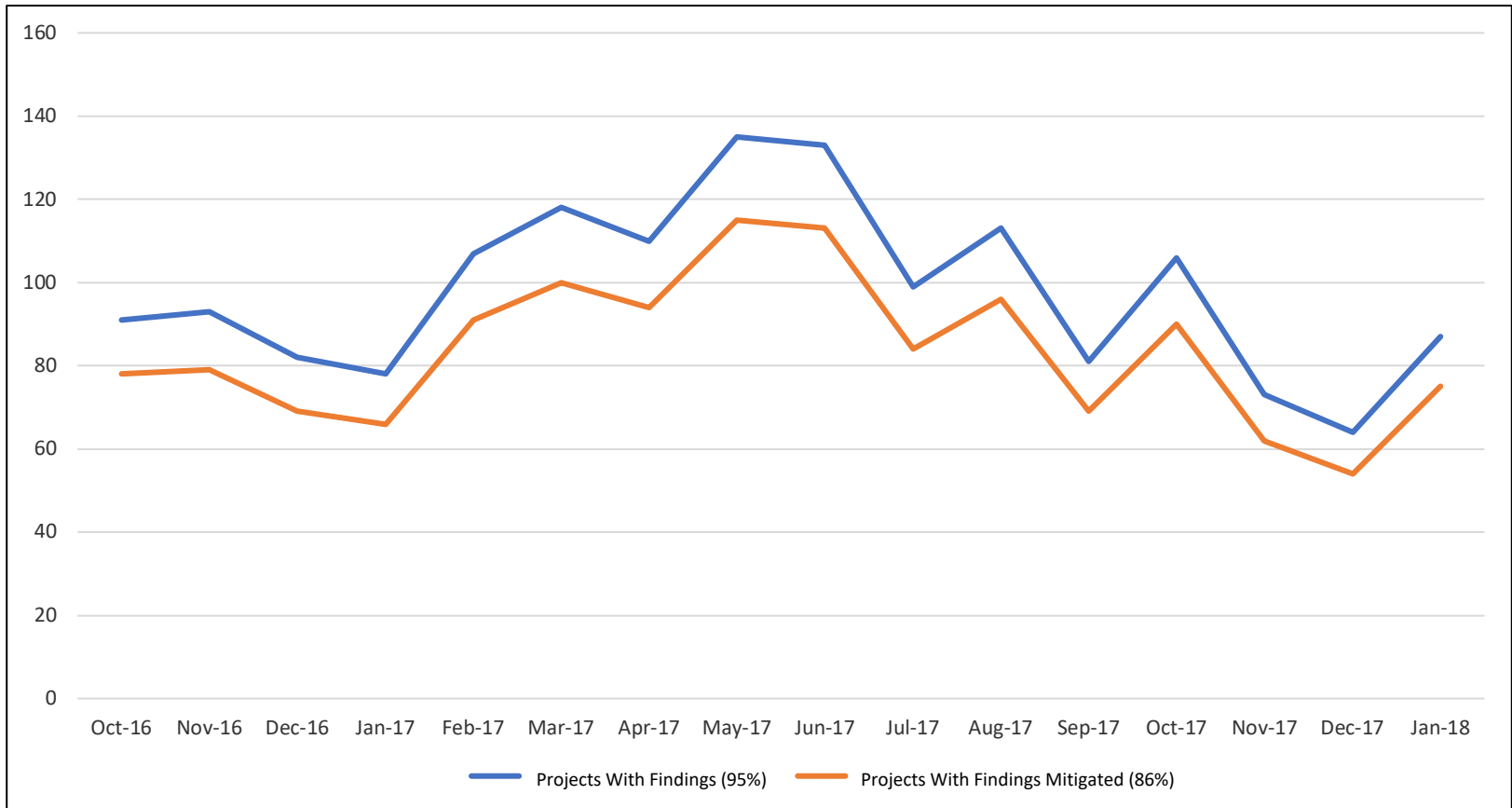
Risk Projects Submitted and Closed

Average Days from Submission to Close

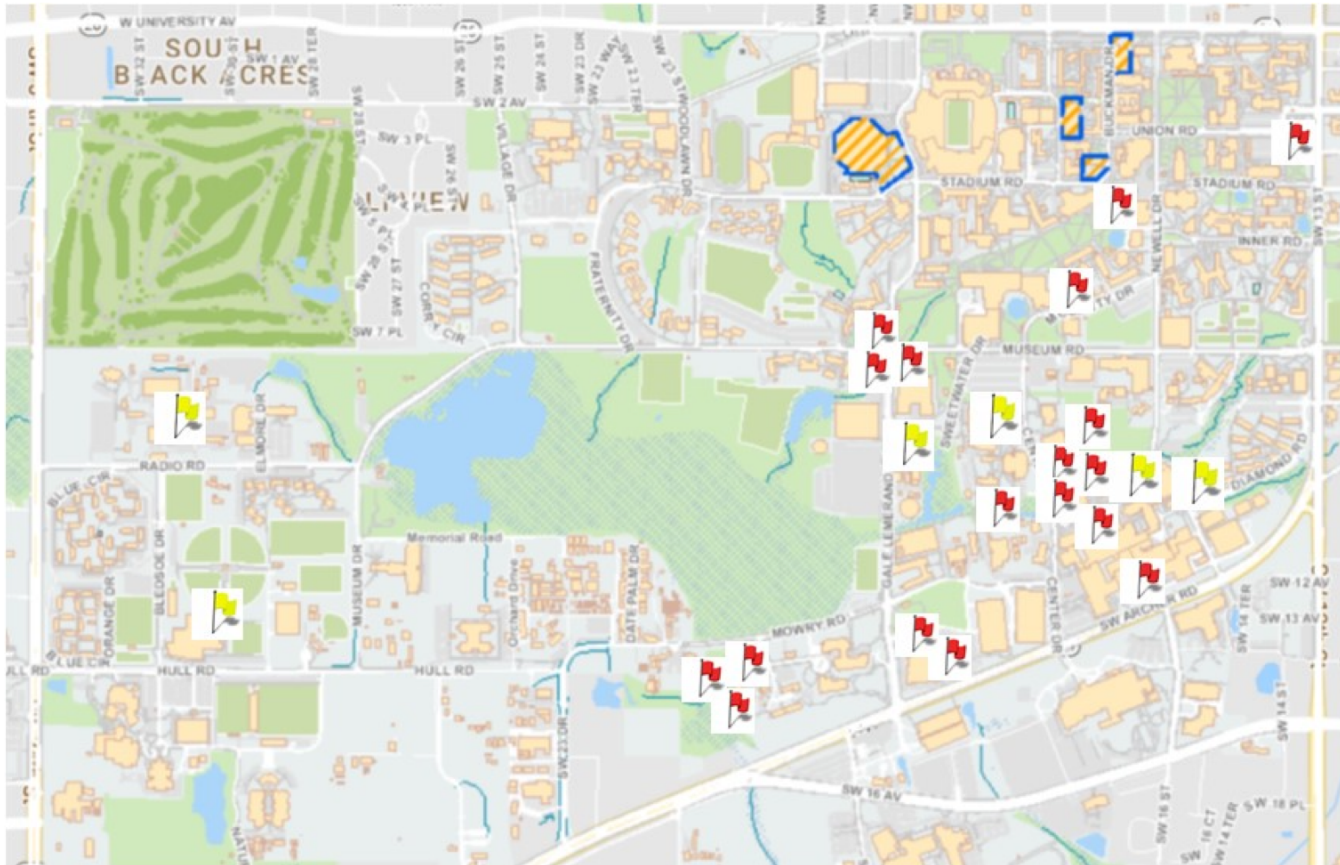


Risk Projects With Findings

Number of Findings Mitigated



How IT Risk Management is Helping UF



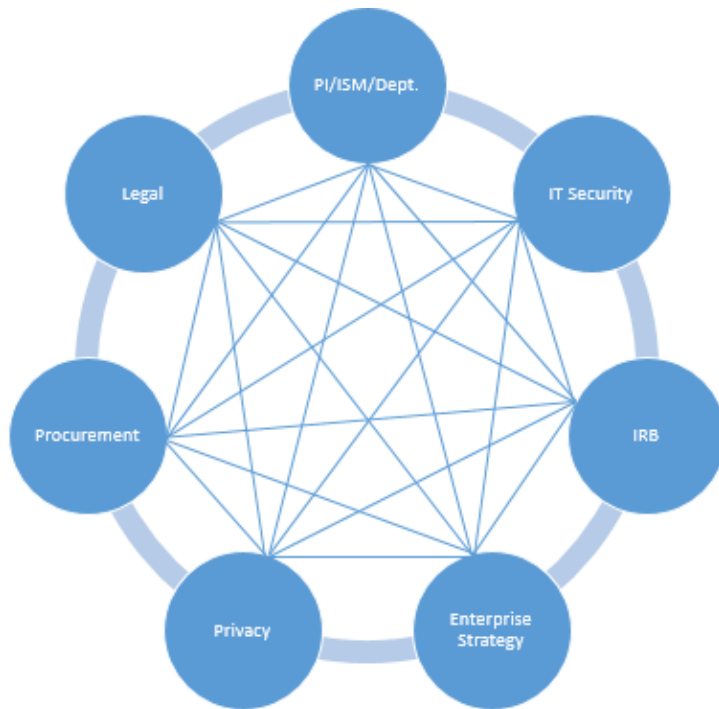
Red Flags = Number of Records Discovered > 500K

Yellow Flags = Number of Records Discovered > 100K and <500K

- Inventorying systems and data
- Identifying and remediating risks
- Moving large repositories of data to enterprise environments
- Reducing redundancy of IT infrastructure
- Complying with laws, regulations, and contracts

“Helps UF identify and manage risk around campus”

Issues Identified with the Current Risk Management Process



- Multiple offices involved in the risk management process
- No end-to-end business process owner
- Faculty and staff are unfamiliar with the process, offices, contacts, and procedures to determine status or escalate issues
- No single process or tool exists to identify the steps involved, monitor progress or track turnaround time for all offices

Improvements Underway

Integrated Risk Management



- Established an Integrated Risk Management (IRM) Advisory Group
- Creating an IRM office to serve as the single point of contact for faculty and staff
- Allocating local Information Security Manager (ISM) resources proportional to volume/activity
- Reengineering the end-to-end process
- Integrating existing systems to develop common platform and process

Improvements Underway

IRM Website

The screenshot displays the Integrated Risk Management (IRM) website. At the top, a navigation bar includes the University of Florida (UF) logo, links for NEWS, CALENDAR, DIRECTORY, GIVING, UF HEALTH, and UF IFAS, and a 'Welcome to UF' message with a dropdown arrow and a search icon. Below this is a secondary navigation bar with links for ABOUT US, GETTING STARTED, FAST PATH SOLUTIONS, DATA MANAGEMENT, and ADDITIONAL RESOURCES.

A prominent red banner with a warning triangle icon reads: "UNDER CONSTRUCTION - THE FAST PATH SOLUTION PAGE IS UNDER CONSTRUCTION, AND A NEW REGISTRATION PROCESS IS COMING SOON." A "MORE INFORMATION" link with a right-pointing arrow is located to the right of the banner.

The main content area features a large graphic on the left with a padlock icon inside an orange location pin, and the letters "IRM" in blue. Below this is a stylized map with a red and green path connecting various points. To the right of the graphic is a blue box titled "GETTING STARTED WITH IRM" under a "FACULTY AND STAFF" header. The text in this box explains that the section will help users understand the risk assessment process. Below the text is a "LEARN MORE" link.

In the bottom left corner, a blue box titled "Quick Links" contains a list of links: "Fast Path Solutions", "Data Storage and Classification", "Additional Resources", "Previously Assessed Global Search", and "Add a Fast Path Solution to the List".

In the bottom right corner, a yellow box titled "Contact IRM" provides contact information: "IRM-UF@ufl.edu" and the phone number "(352) 294-3589".

<https://irm.security.ufl.edu/>

Improvements Underway

Fast Path Solutions

 UNDER CONSTRUCTION - THE FAST PATH SOLUTION PAGE IS UNDER CONSTRUCTION, AND A NEW REGISTRATION PROCESS IS COMING SOON. MORE INFORMATION →

R

R is a free programming language and software environment for statistical computing and graphics. The R language is widely used among statisticians and data miners for developing statistical software and data analysis.

This technology was assessed for use with open and sensitive data.

See the UF data classification [policies](#) and [guidelines](#) for more information about open, sensitive, and restricted data.

Please follow the **Usage Guidelines** in the chart below to properly use this Fast Path Solution.

Open Data	Sensitive Data	Restricted Data
No action needed	No action needed	Submit an Intake

For a use other than what is described here, [submit an intake form](#) in the risk management system. After submitting an intake form, a representative from the Information Security Office will be in touch to help with next steps.

Tags: statistical software, no cost, software, open, data manipulation, data calculation, graphical display

QUICK FACTS

Eligibility

Faculty and Staff

Requirements

Follow the usage guidelines chart on this page.

Provided by UF

no

Purchase or Download

<https://www.r-project.org/>

Support

IRM-UF@ufl.edu

(352) 294-3589

Two-Factor Authentication Update

02/22/2018

UF | Information Technology



Two-Factor Presentations and Discussions

- IT@UF
 - April 27, 2017
 - August 24, 2017
 - January 25, 2018
 - February 22, 2018
- Deans Meeting
 - January 9, 2018
 - February 13, 2018
- Cabinet Meeting
 - January 19, 2018
- Student Affairs
 - January 17, 2018
- University IT Committee
 - January 25, 2018
 - February 22, 2018
- UF Health IT
 - August 17, 2017
 - December 5, 2017
- University of Florida Foundation
 - January 8, 2018
- University Athletic Association
 - January 9, 2018

Phased Adoption

- Phase I – UFIT rollout completed in September 2017
- Phase II – Risk based with opt in for UF faculty, staff, and affiliates
 - February 1, 2018 – Risk Based Deployment
 - Enroll individuals handling restricted data
 - Enroll individuals who have had their account compromised
 - Enroll new employees during on-boarding
 - Enroll early adopters
 - April 5, 2018 – Opt in for other UF faculty, staff, and affiliates

Two-Factor Enrolled Who's In

- UFIT
- University Payroll & Tax Services
- Treasury Management
- University Bursar
- Unit level IT staff

Two-Factor Enrolled Who's Next

- UF Human Resource Services
- University Registrar
- Office of the Vice President and Chief Financial Officer
- Institute of Food and Agricultural Sciences
- UF Student Affairs
- Warrington College of Business

Two- Factor Statistics

- Approximately 800 users enrolled
- Authentication types
 - Duo Push: 82%
 - Phone Call: 9%
 - Passcode: 2%
 - Hardware Token: 7%
- Authentications
 - Over 100K in the last 90 days

Communication Plan

- General communication announcing new service is coming
 - February 8, 2018 – Work@UF
- Tailored communication to high risk areas
 - Commenced February 1, 2018
- Ongoing communication during Phase II
 - Commenced on February 01, 2018
 - General and specific communication tailored to specific audiences
 - UFIT News and ALL_IT announcements week ending 03/02/2018
- General communication announcing opt in availability
 - April 5, 2018 – Work@UF