

UF Faculty Senate Orientation – August 25, 2020



AGENDA

1. Welcome!
2. President Kent Fuchs
3. Introduction from all new Senators
(Your name, college, and one sentence about what you do.)
4. Faculty Senate & Shared Governance
5. Parliamentarian
6. Additional Q&A

President Kent Fuchs (2015-present)

Opening Remarks



FACULTY SENATE & SHARED GOVERNANCE

The organization and operation of the Faculty Senate is specified in the [UF Constitution](#) and [Bylaws](#) @ [Senate.ufl.edu](#).



The screenshot shows the top portion of the University of Florida Faculty Senate website. At the top left is the UF logo with the text 'Faculty Senate UNIVERSITY of FLORIDA'. To the right of the logo is a horizontal navigation menu with the following items: 'RESOURCES', 'MASTER CALENDAR', 'SENATE MEMBERSHIP', 'COMMITTEES & COUNCILS', 'COLLEGE LEVEL SHARED GOVERNANCE', and 'ABOUT'. Below the navigation menu is a large heading 'WELCOME TO UF FACULTY SENATE'. Underneath this heading is a welcome message: 'Welcome to shared governance through the University of Florida Faculty Senate.' This is followed by the name 'Sylvain Doré', his title '2020 - 2021 Faculty Senate Chair', and his email address 'FacultySenateChair@ufl.edu'. At the bottom left of the section is a portrait photograph of Sylvain Doré, a man with dark hair wearing a white shirt and tie.

UF Faculty Senate
UNIVERSITY of FLORIDA

RESOURCES MASTER CALENDAR SENATE MEMBERSHIP COMMITTEES & COUNCILS COLLEGE LEVEL SHARED GOVERNANCE ABOUT

WELCOME TO UF FACULTY SENATE

Welcome to shared governance through the University of Florida Faculty Senate.

Sylvain Doré
2020 - 2021 Faculty Senate Chair
FacultySenateChair@ufl.edu



UF has ~5,000 Fac with distinguished records in teaching, research and service. Faculty members play a central role in shared governance, in units at every level: University, College, Departments, Centers and Institutes, Statewide

FIVE PRINCIPLES OF SHARED GOVERNANCE

1. Mutuality, Collegiality and Collaboration: Faculty and administration express support for responsibilities of one another. Either faculty or administration can call meetings of unit. Unit has a joint process for setting priorities for unit resource
2. Transparency: Faculty and administration regularly report to one another
Unit has processes that establish open meeting requirements
Unit has readily available written guidelines & policies
3. Representative Participation: Faculty elect members and/or chairs for faculty committees. The unit has an elected body with elected leadership that represents faculty views
4. Mutual Accountability: Unit engages in regular evaluation of timeliness of responses to requests for information and consultation. Unit regularly assesses effectiveness of shared governance and makes modifications where necessary
5. Clarity of Roles: Unit has policy for areas of faculty and administration responsibilities for determination, recommendation, and consultation. Unit has due process rules for resolution of differences between faculty and administrators

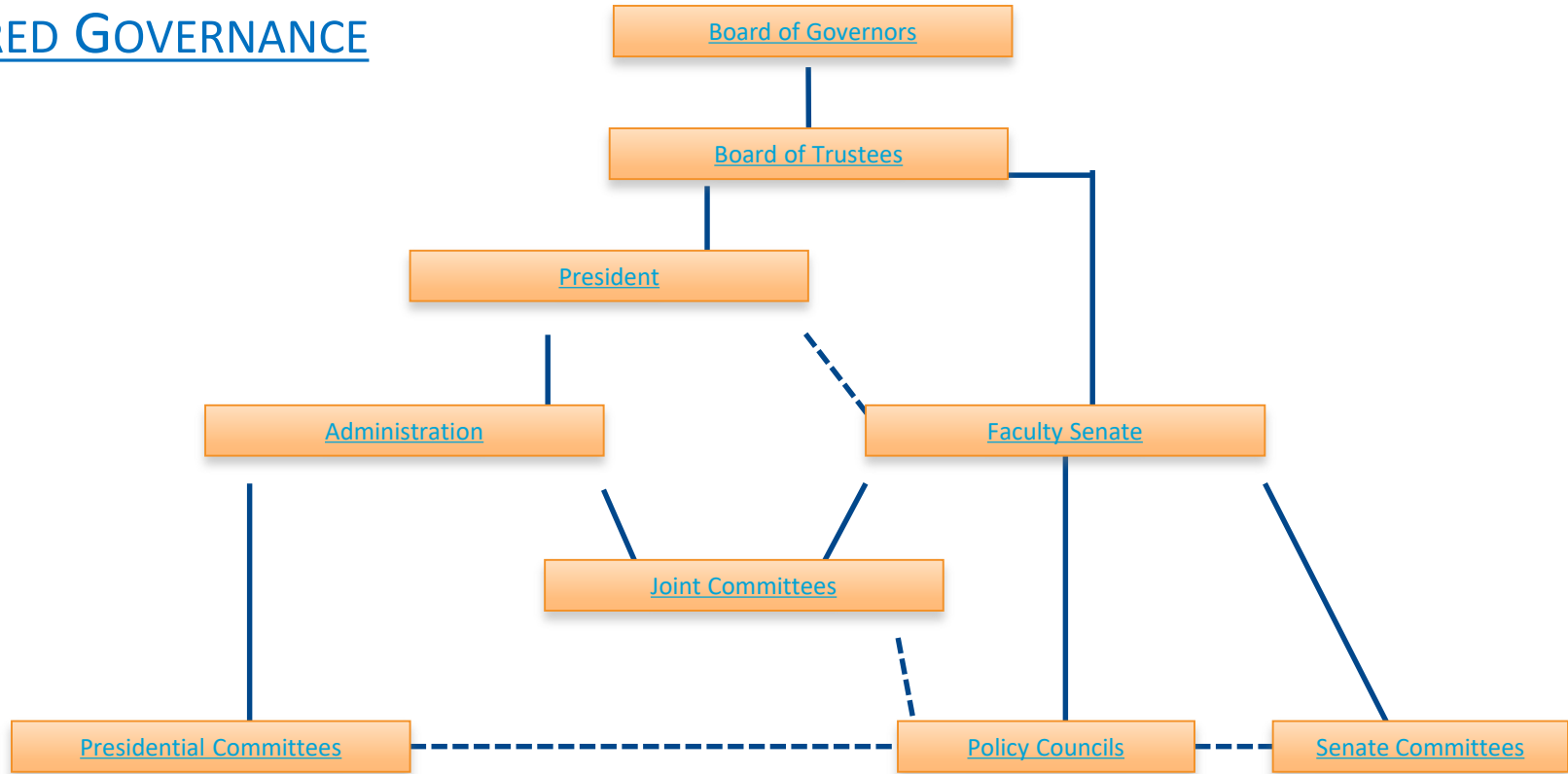
INDICATORS OF SHARED GOVERNANCE

- Board of Trustees and President acknowledge the importance of shared governance
- Faculty members can express dissenting views on governance without reprisal
- Campus climate supports a diversity of ideas
- Relationships between faculty, administrators, and governing board are cooperative
- Given reasonable time, the faculty, administrators, and board respond expeditiously to requests from each other
- Faculty committees determine educational policy, curriculum design, curriculum review, and standards for evaluating teaching and scholarship
- Faculty committees largely determine standards for hiring, retention and promotion of faculty
- Faculty sets agendas, chooses representatives and leadership, and establishes procedures for committees that oversee those areas in which the faculty has primacy
- Faculty has an influential role in developing the institutional budget

FACULTY SENATE

- The Faculty Senate shall be the legislative body of the University, thereby providing a forum for mutual exchange of ideas between senior officers and faculty
- In this capacity, the Senate shall take cognizance of, and may legislate with respect to matters which concern more than one college, school, or other major academic unit, or which are otherwise of general university interest
- Senate members are elected proportionally according to the number of faculty in each college (with a maximum of 25), for a total of 150 Senators
- The Faculty Senate is designed to be a deliberative body in which active and evolving discussion with colleagues shapes policy
- Accordingly, no proxy or absentee votes are allowed
- Absence from three consecutive meetings without notice constitutes resignation from the Senate

UF MODEL FOR SHARED GOVERNANCE



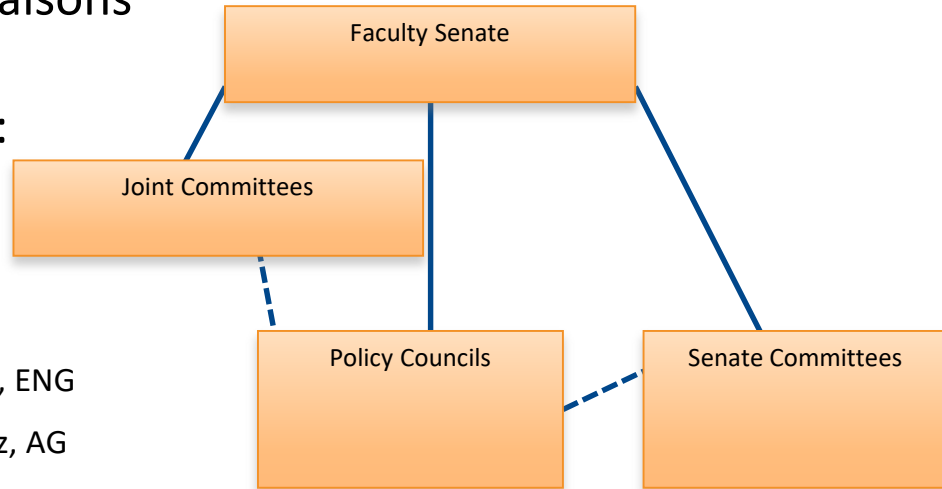
LIAISONS TO THE FACULTY SENATE

- President and Provost
- Vice Presidents of the University
- Deans of academic units
- Registrar
- Members of the Senate Steering Committee
- Chairs of committees and councils (if not elected members of the Senate)
- Undergraduate students (5)
- Graduate students (7)

FIVE POLICY COUNCILS

Senators elected by the Senate are members of the Policy Councils. They are charged with making policy recommendations and serve as liaisons between the Senate and the administration within their areas:

1. Academic Policy: Hans van Oostrom, ENG
2. Faculty Welfare: Sarah Lynne, AG
3. Budget: Ashley Ghiaseddin, MED
4. Research and Scholarship: Keith Rambo, ENG
5. Academic Infrastructure: Richard Scholtz, AG



ACADEMIC POLICY COUNCIL (APC)

- Admission and graduation requirements, majors, departments, colleges, other academic units, and other academic programs of study
- Evaluates any proposed changes in academic organization that are not contained within a single college
- Student life as it affects student academic performance

BUDGET COUNCIL

- Recommends budget priorities involving academics and research
- Monitors past budget allocations
- Makes recommendations regarding long range allocations and costs of strategic plans

Budget Tools

[UF Financial Transparency Portal](#) *(Open to all who have access to Enterprise Reporting. Access that is needed: UF_FI_UNIVERSAL_INQUIRY)*

*** [Video tutorial to using the UF financial transparency portal](#)

*** [Text guide to the UF Financial Transparency Portal](#)

2017

[Tuition Collected by Department \(2017\)](#)

[Dept - Major Correspondence \(2017\)](#)

[Further Detail of Tuition Revenue snapshot for 2017 \(only down to college level\)](#)

2016

FACULTY WELFARE COUNCIL

- Academic criteria for appointment to the faculty and for promotion and tenure
- Faculty diversity
- Matters important to the quality of faculty life
- Academic freedom

RESEARCH & SCHOLARSHIP COUNCIL

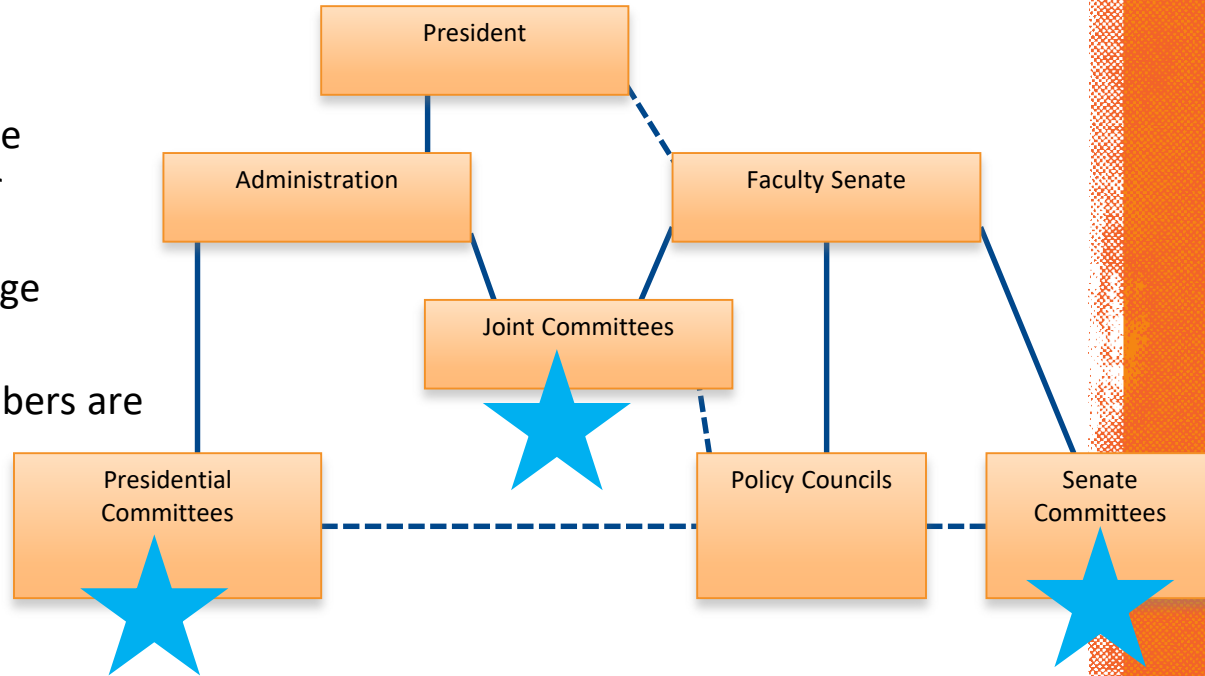
- Appropriate policies and priorities to support the quality, stature, and relevance of the University's research initiatives
- Existing, expanded and new interdisciplinary research initiatives based on the expertise of the faculty
- Matters concerning graduate and undergraduate research experience

ACADEMIC INFRASTRUCTURE COUNCIL

- Facilities and services necessary for academic excellence
- Libraries, computing, sustainability, historical preservation, parking, physical plant and maintenance, campus master plan

UNIVERSITY COMMITTEES

- Senate Standing Committees – members are elected by the Senate from the faculty at large
- Joint Committees – members are elected by the Senate and other members are appointed by the President from the faculty at large
- Presidential Committees – members are appointed by and report to the President



Name	Faculty membership consists of:	Seat filled by:	Reports to:
Faculty Senate Committees	UF Faculty	Nominated by UF Faculty & elected by UF Faculty Senators	UF Faculty Senate
Joint Committees	UF Faculty	Nominated by UF Faculty; Typically 50% elected by UF Faculty Senators and 50% Appointed by UF President/President's Designee	UF President & UF Faculty Senate
Presidential Committees	UF Faculty	Nominated by UF Faculty & appointed by UF President	UF President
(5) Senate Policy Councils	*Current (at the time of the election) Faculty Senators	Nominated by UF Faculty & elected by UF Faculty Senators	UF Faculty Senate

Of special note:

[Honorary Degrees and Distinguished Awards Committee](#)

-Entertains FACULTY suggestions as to individuals to whom honorary degrees shall be granted

[Academic Personnel Board](#)

- Advises the President with respect to promotion and tenure nominations, serving in a fact-finding and consultative role

FACULTY SENATE STEERING COMMITTEE (MONTHLY MEETING AUG-MAY)

Officers:

- Chair, Sylvain Doré, MED
- Chair-Elect, David Bloom, MED
- Past-Chair, Ray G. Thomas, CLAS

Council Chairs:

- Budget, Ashley Ghiaseddin
- Infrastructure, Richard Scholtz
- Research & Scholarship, Keith Rambo
- Welfare, Sarah Lynne
- Academic Policy, Hans van Oostrom

Members at Large:

- Keith Diem, AG
- Juan Nino, ENG
- Richard Stepp, CLAS

Liaisons:

- President, Kent Fuchs
- Provost, Joe Glover

Staff:

- Secretary, Laurie Bialosky
- Parliamentarian, Taylor Rose

WHY SERVE IN SHARED GOVERNANCE?

- Help set policy that contributes to academic excellence
- Meet other faculty outside your own program
- Explore interdisciplinary potential of work at UF
- Develop an institutional memory
- Network with other leaders

SENATE CONTACTS

- Chair: Sylvain Doré
FacultySenateChair@ufl.edu
(352) 392-9019
- Senate Secretary: Laurie Bialosky
lbialosky@aa.ufl.edu
(352) 392-9019
- Senate Office: 134 Tigert



Suggestions?

Complete:

https://ufl.qualtrics.com/jfe/form/SV_5t1siz3crlcElv3 at:

www.senate.ufl.edu